

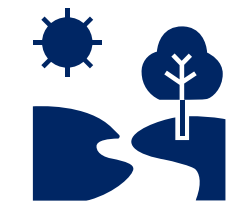
Cumberland Plain Conservation Plan enhancements 2024

Enhancements to the CPCP will strengthen protections to important biodiversity while continuing to facilitate the delivery of around 73,000 homes.

\$2.5M
to enhance delivery of the Caring for Country Aboriginal Outcomes Strategy



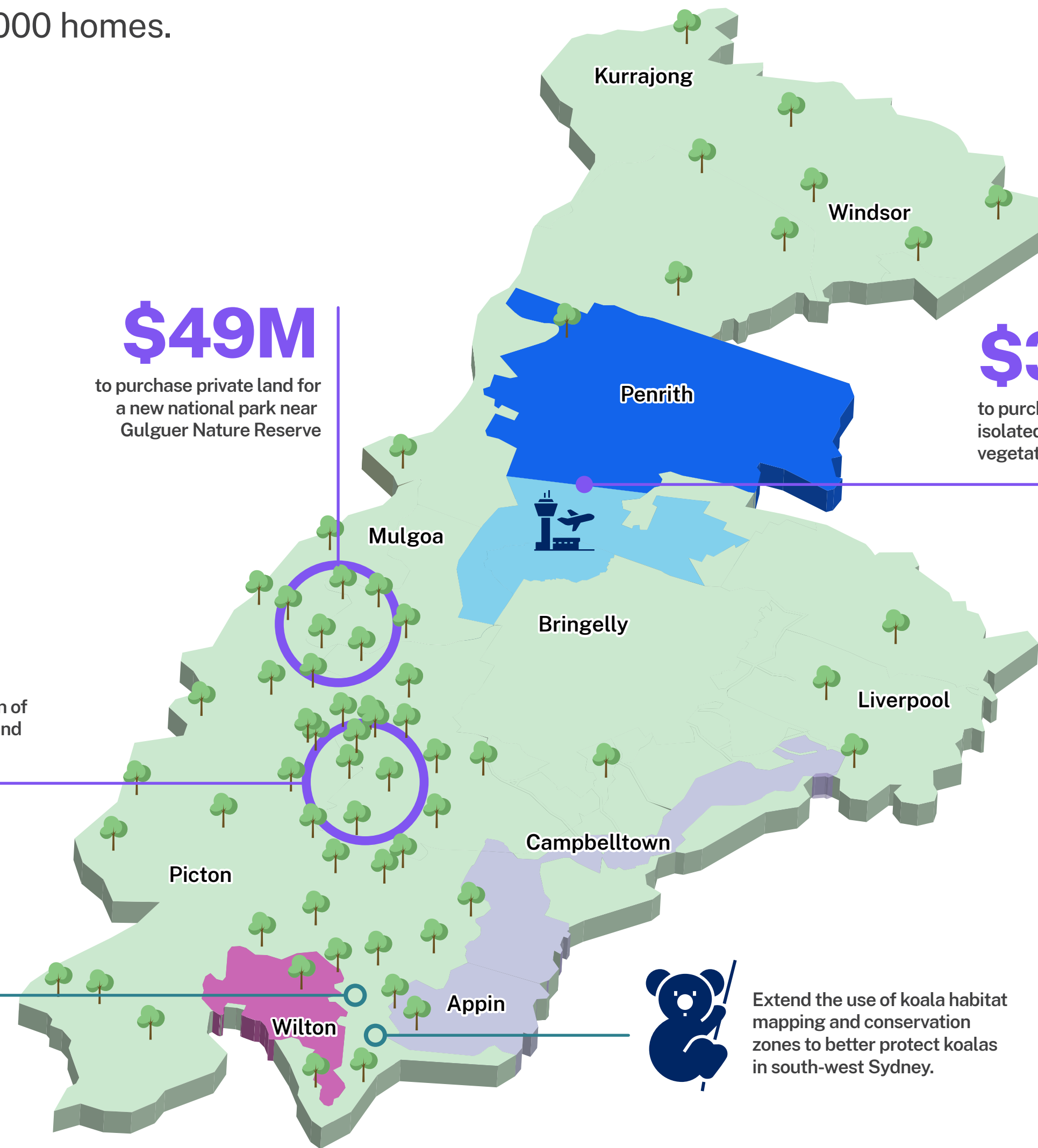
Further protect native vegetation on land avoided from development by increasing use of conservation zoning.



Support biodiversity in land certified for development by integrating native vegetation into open spaces and parklands during planning.



Embed koala fencing guidelines into the planning system (Wilton and Greater Macarthur growth areas).



\$49M

to purchase private land for a new national park near Gulguer Nature Reserve

\$31M

to purchase small properties with isolated patches of threatened vegetation in Orchard Hills and Aerotropolis

\$22M

to fast track the protection of Cumberland Plain Woodland by purchasing credits.

- Greater Penrith to Eastern Creek investigation area
- Western Sydney Aerotropolis
- Greater Macarthur growth area
- Wilton growth area



Extend the use of koala habitat mapping and conservation zones to better protect koalas in south-west Sydney.