

BEAUMONT HILLS PARKS FOR PEOPLE

CONCEPT DESIGN 100%



Acknowledgment of Country

The land on which we live and work is aboriginal land. Aboriginal people have lived on the Australian continent for at least 65,000 years. Non-aboriginal people have lived in Australia for just 230 years.

As a practice, we are working towards an understanding of that fact, and how it might inform our relationship to the land, its original people, and the work that we do. We acknowledge that we have a long way to go. Our studios are located on Gadigal, Ngunnawal and Whadjuk country in Sydney, Canberra and Perth respectively.



CLIENT

Department of Planning, Industry and Environment
New South Wales Government

PROJECT TEAM

Lead Consultant | Landscape Architecture: Place
Laboratory

Heritage Consultant: EMM Consulting

Civil & Structural Engineering: Hyves Design

Lighting: WEBB

DOCUMENT CONTROL

Revision	Description	Date of Issue
A	100% Landscape Concept DRAFT	7.02.2022
B	100% Landscape Concept DRAFT	10.02.2022
C	100% Landscape Concept	11.03.2022

CONTENT

SITE LOCATION	3	HARDSCAPE	12
BETTER PLACE OBJECTIVES	4	MATERIAL PALETTE	13
LANDSCAPE SITE PLAN	5	FURNITURE & EQUIPMENT	13
CIRCULATION & FUNCTIONS	6	PLANTING PALETTE	14
METRO PROTECTION ZONE	7	SHADE STUDY	18
ARCHAEOLOGICAL SIGNIFICANT ZONE	8	VIADUCT SHADE	18
VIEW 1 - INFORMAL SPORT COURT	9	LIGHTING CONCEPT	19
VIEW 2 - SKATE PLAZA	10	LIGHTING DATA SHEET	20
VIEW 3 - PUMP TRACK	11		
MATERIAL PALETTE	12		

SITE LOCATION



BETTER PLACE OBJECTIVES

The concept design has addressed the principle of Better Placed public open space objectives from the following aspects:

<p>OBJECTIVE 1.</p> <p><u>Better fit</u></p> <p>contextual, local and of its place</p>	<p>OBJECTIVE 2.</p> <p><u>Better performance</u></p> <p>sustainable, adaptable and durable</p>	<p>OBJECTIVE 3.</p> <p><u>Better for community</u></p> <p>inclusive, connected and diverse</p>	<p>OBJECTIVE 4.</p> <p><u>Better for people</u></p> <p>safe, comfortable and liveable</p>	<p>OBJECTIVE 5.</p> <p><u>Better working</u></p> <p>functional, efficient and fit for purpose</p>	<p>OBJECTIVE 6.</p> <p><u>Better value</u></p> <p>creating and adding value</p>	<p>OBJECTIVE 7.</p> <p><u>Better look and feel</u></p> <p>engaging, inviting and attractive</p>
--	--	--	---	---	---	---

Better fit

Context:

Considering its location and urban context, the park's program has a strong focus on active play, which will provide very much needed youth amenities at its completion, as well as complement the function of the adjoining Caddies Creek Sport Complex in the long term.

Heritage:

The design is sympathetic to the White Hart Inn archaeological site and different views of the history among the local community. The archaeological site is preserved and undisturbed. The simplistic design treatment with native grass creates a calming landscape setting for people to relax and reflect, and also makes alternative interpretation in the future possible.

Better performance

Biodiversity:

The design aims to increase the biodiversity of the site by introducing native plants, particular native grass species, which improve the soil health and reflect the Cumberland landscape pattern.

Urban heat:

Reducing surface heat is an important design consideration. The use of impermeable hard surface is limited to active play areas with high pedestrian traffic. Tree canopies are provided wherever possible with considerations of the Metro protection zones.

Renewable energy:

The entire lighting system is supported by solar power to reduce the greenhouse gas emission, as well as construction and operational cost.

Better for community

Connection:

A number of new pedestrian links are created to ensure easy access to the park from the regional shared path network and Caddies Creek Sport Complex. A strong east-west pedestrian link also improves the accessibility to the Sport Complex from areas west of Windsor Road and adjacent metro stations.

Function:

The park's functions are informed by a rigorous community and stakeholder engagement process. The proposed functions are closely aligned with the community needs, especially for youth activities.

Better for people

Safety:

The spatial, planting and topographic treatment afford good passive surveillance of the entire site. The main pedestrian connection to Caddies Creek Sport Complex, informal sport courts and skatepark are lit during evening to extend their usable hours.

Comfort:

Located next to the busy Windsor Road, it is challenging to create a quiet space for respiration. However, the design utilises any opportunity to provide temporary relief from the noisy road through spatial arrangement and increased greenery.

The location of sport amenities and seating areas are carefully considered to take advantage of the shade form viaduct structure and new canopy trees.

Better working

Program:

Besides youth activities, the park's program also considers a balanced approach to meet the needs of different user groups, such as people of different ages and genders, family with children, users of the shared path for exercise, and the future Sport Complex

Better value

Budget and function:

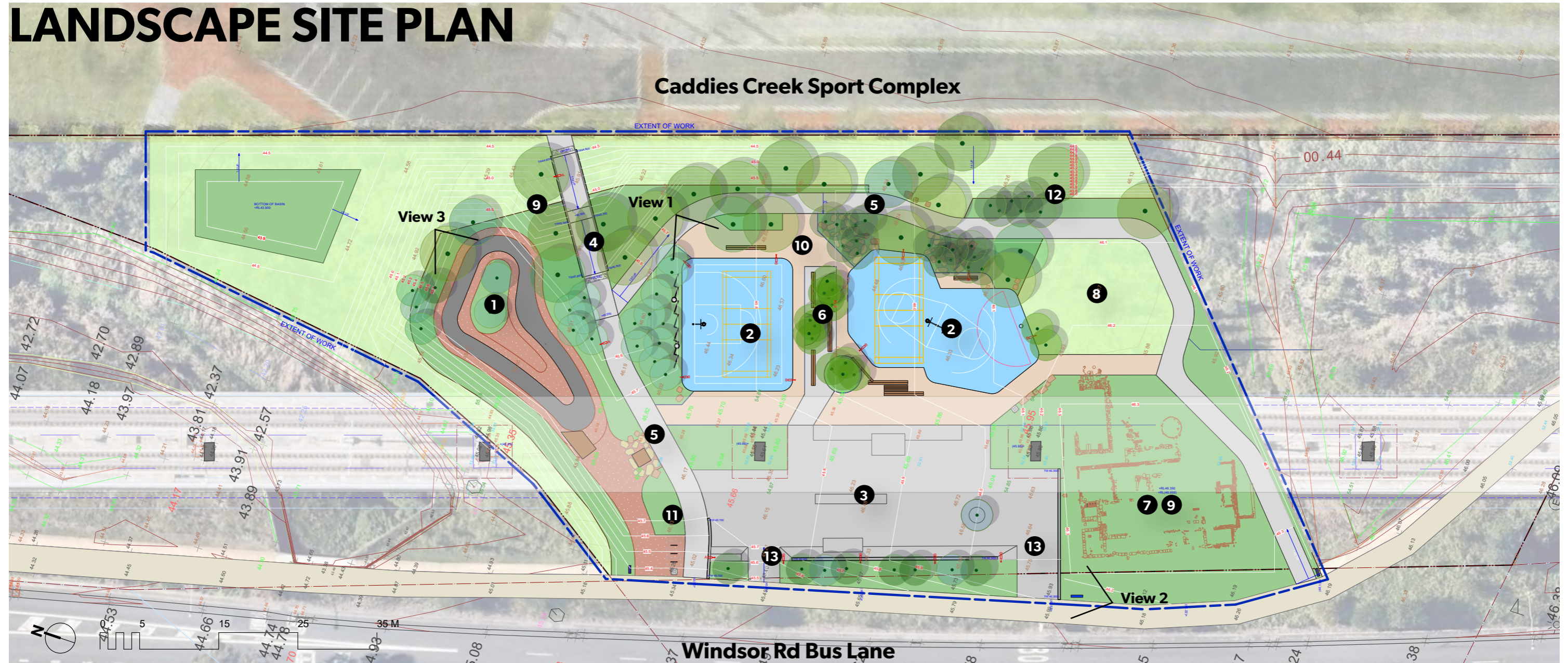
The design concentrates on provision of high quality and multifunctional amenities most needed by the local community, rather than spreading the budget thin. Reduction of long term maintenance and operational cost will also be achieved through careful selection of low maintenance planting and hardscape materials, and use of renewable energy.

The function of the park takes into consideration of the public amenities in the surrounding area, ensuring the park contribute to a wider network of public spaces and complement each other's functions.

Better look and feel

The design takes a considered approach in aesthetics to respond to the local landscape character, adjacent infrastructure and user groups. The design aims to create an atmosphere that is green, genuine and playful, where people feel a sense of relief from the busy city and encouraged to be part of the action.

LANDSCAPE SITE PLAN



1. Pump track with asphalt surface
2. Informal court with basketball hoops
3. Skate plaza
4. Universal access ramp
5. Share path
6. Custom seating furniture
7. White Hart Inn archaeological site
8. Lawn
9. Mass planting
10. Stabilised decomposed granite sand paving
11. Bike racks and litter bin
12. New trees
13. Service vehicle access



Pump track

The pump track provides opportunities for children and teenagers to practice their skills. It is compact in size and well situated among greenery. The asphalt surfaced track also complements the skate plaza and serves as an alternative to skate bowl.



Informal courts

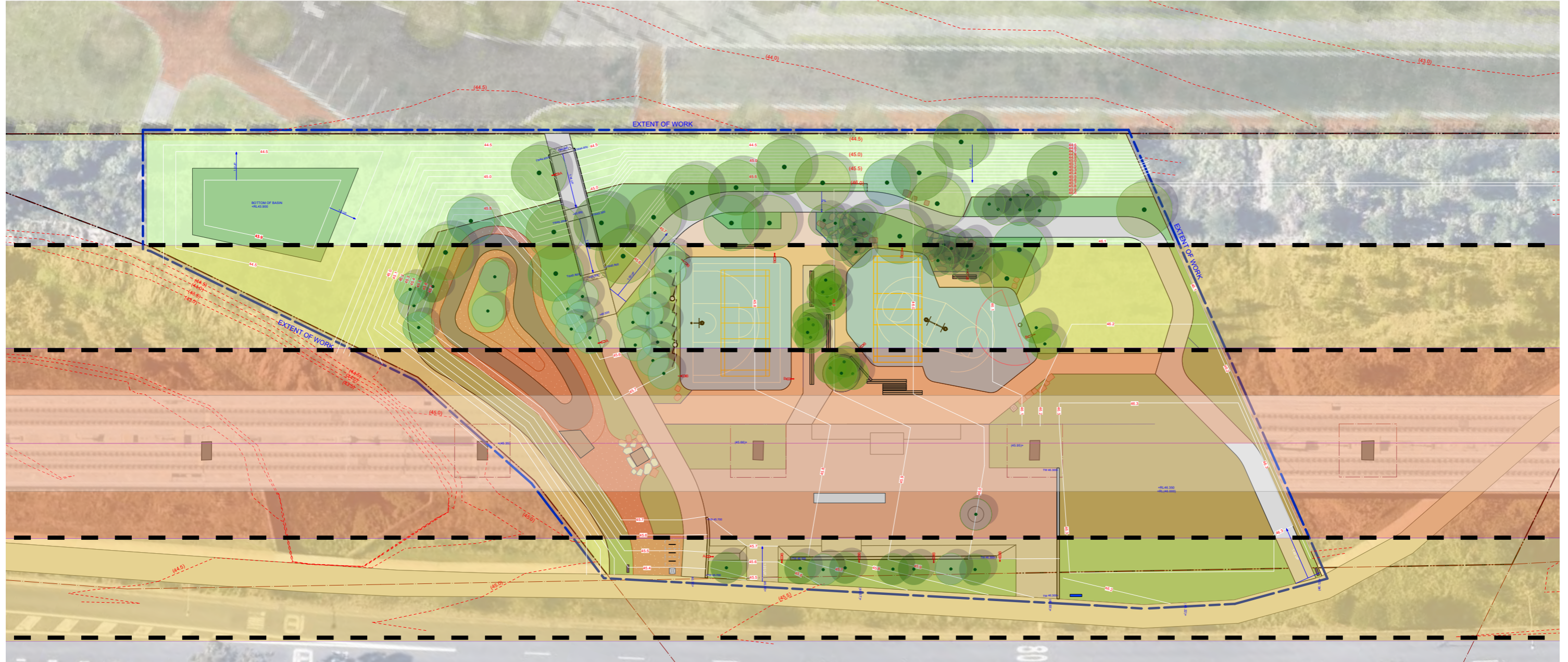
The informal sport courts aim to maximise the potential for multiple groups uses within a relatively small area. The layout prevents a single group dominant the site and encourages younger and less experienced players to participate. It provides three basketball stands, including one 11x15 standard half court.



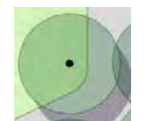



Skate plaza

The plaza is a street style skating area, providing a range of skate opportunities for beginners and advanced skateboarders. The skate area is partially shaded by the viaduct. Additional shade will be provided by the trees along the western boundary.

METRO PROTECTION ZONE



-  **Metro Protection Zone 1:** Tree exclusion zone. This zone represents the area that must not be encroached upon by any future development and its construction, with exception of approved minor works under the elevated viaduct section
-  **Metro Protection Zone 2:** Trees with a full-grown height less than 5m may be permitted and shall only be located within the second reserve zone Any developments that take place within the second reserve require an engineering assessment of the works to predict their effects on the at grade and elevated rail infrastructure.
-  Large canopy tree
-  Small tree - mature height <5m

ARCHAEOLOGICAL SIGNIFICANT ZONE



- SHR cartilage
- High- moderate archaeological significant area
- Moderate-low archaeological significant area

Within the archaeological significant areas, no excavation below the original ground level (prior to the skyrail construction) is proposed.

VIEW 1 - INFORMAL SPORT COURT



VIEW 2 - SKATE PLAZA



VIEW 3 - PUMP TRACK



MATERIAL PALETTE

HARDSCAPE



Insitu concrete path



Painted concrete court



Skatepark concrete



Pump track: Stabilised compacted soil and asphalt top surface



Stabilised decomposed granite sand



Sandstone flagstones in gardens and paved area



Recycled concrete stepping stones



Natural sandstone boulders in gardens and paved area

MATERIAL PALETTE

FURNITURE & EQUIPMENT



Proprietary galvanized bike rack



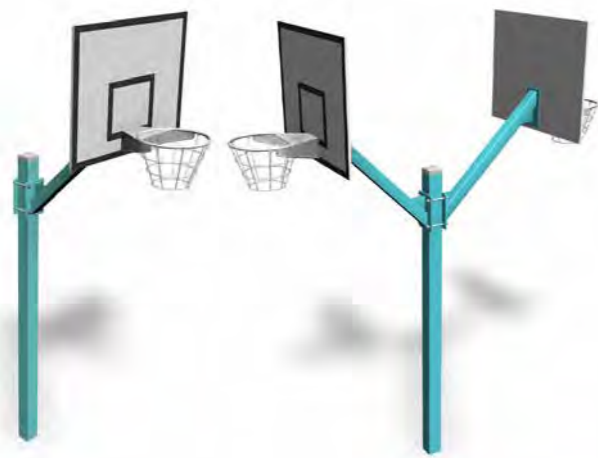
Proprietary litter bin
Gossi park 'Bayside' fire retardant lockable bin enclosure with otto bin to fit inside.



Proprietary interpretive sign



Proprietary park/wayfinding sign



Proprietary basketball stand
Model: Lappset basketball stand single and double



Proprietary heavy duty netball ring
Model: Grand Slam NB303



Custom sport fence H=3m



Custom furniture with recycled timber

PLANTING PALETTE

TREES



Backhousia myrtifolia
Grey Myrtle



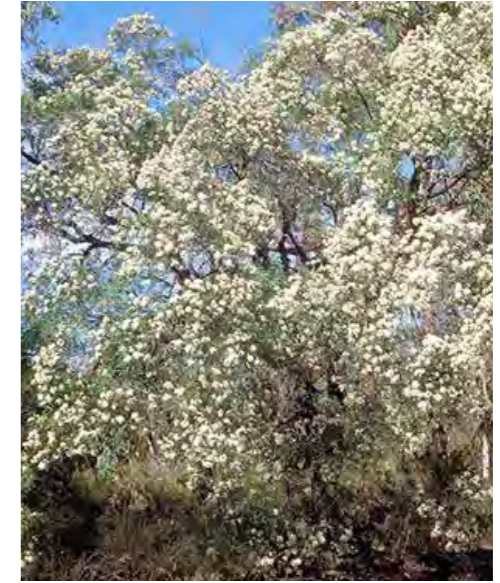
Eucalyptus ovata
Swamp Gum



Corymbia maculata 'Ribbons of Hope'
Spotted Gum



Melaleuca decora
White Feather Honeymyrtle



Angophora bakeri
Narrow-leaved Apple



Elaeocarpus reticulatus 'Prima Donna'
Blueberry Ash



Allocasuarina littoralis
Black She-oak



Tristaniopsis laurina
Small-leaf Water Gum

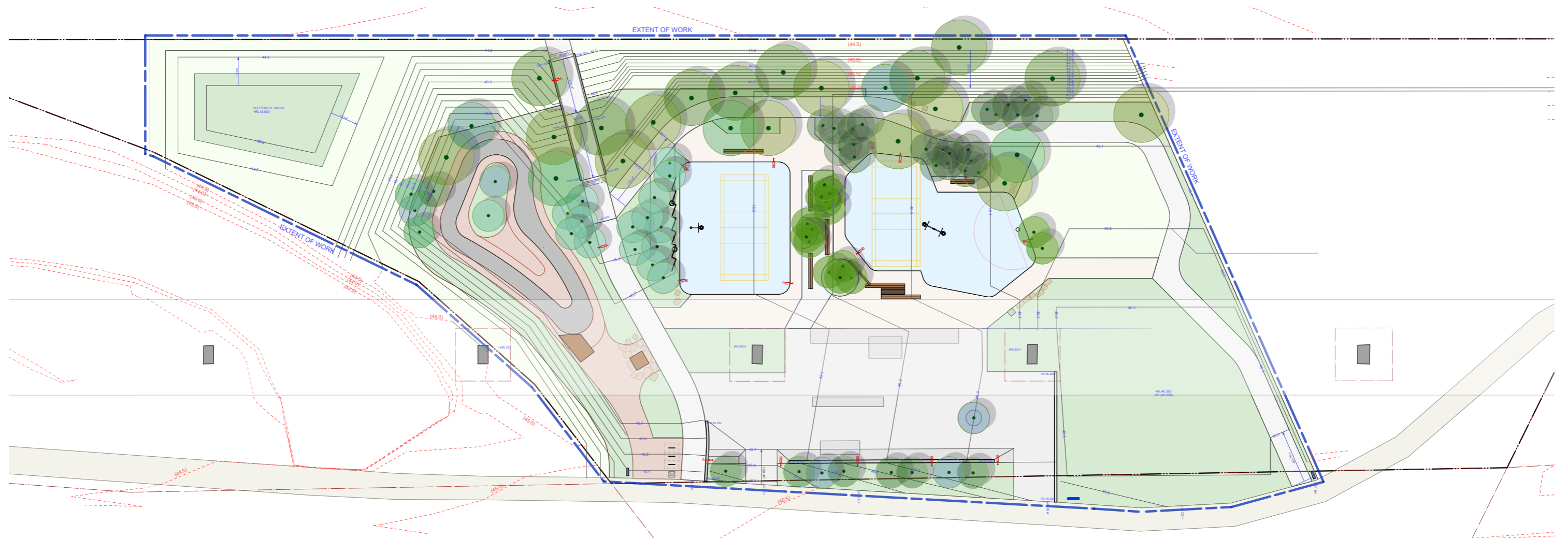


Corymbia eximia nana
Narrow-leaved Apple



Acacia implexa
Hickory Wattle

TREE PLAN



Symbol	ID	Botanic Name	Common Name	Schedule size	Qty.
	AI	Acacia implexa	Hickory Wattle	200L	2
	AL	Allocasuarina littoralis	Black She-oak	200L	22
	AB	Angophora bakeri	Small-leaf Water Gum	200L	16
	BM	Backhousia myrtifolia	Grey Myrtle	200L	3
	CE	Corymbia eximia nana	Dwarf Yellow Bloodwood	400L x10 200L x 6	15
	CM	Corymbia maculata 'Ribbons of Hope'	Spotted Gum	200L	10
	ER	Elaeocarpus reticulatus 'Prima Donna'	Blueberry Ash	200L	7
	EO	Eucalyptus ovata	Swamp Gum	200L	8
	MD	Melaleuca decora	White Feather Honeymyrtle	200L	2
	TL	Tristaniopsis laurina	Small-leaf Water Gum	200L	5 (44.0)
				Total	90

PLANTING PALETTE

GARDEN BED MIX

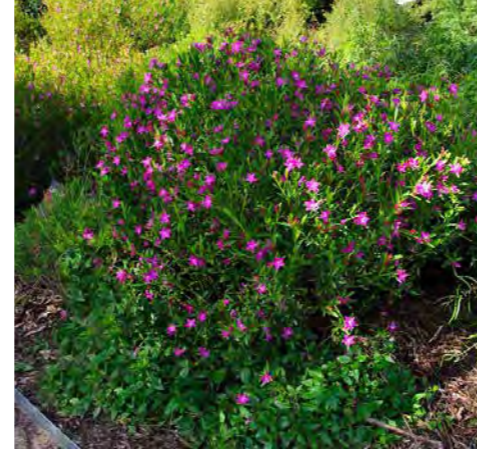
The garden mix is used at key locations associated with main activities to accentuate the spatial quality.



Correa alba 'Coastal Pink'
Correaa



Philotheca myoporoides profusion
Wax Flower



Crowea saligna 'Rosy Glow'
Willow Leaved Crowea



Indigofera australis
Native Indigo



Westringia fruticosa 'Mundi'
Dwarf Coastal Rosemary



Grevillea rosmarinifolia 'Rosy Posy'
Grevillea Rosy Posy



Hibbertia scandens
Snake Vine



Hardenbergia violacea
Hardenbergia



Eremophila glabra 'Blue Horizon'
Common Emu Bush



Commelina cyanea
Scurvy Weed



Conostylis candicans
Native Daisy



Conostylis candicans
Grey Cottonheads



Philodendron xanadu
Philodendron



Asplenium scolopendrium
Harts Tongue Fern



Dianella Caerulea
Blueberry Lily



Liriope Evergreen Giant
Liriope



Viola hederacea
Native Violet



Dichondra repens
Kidney Weed

PLANTING PALETTE

GRASS MIX

Native grass mix is the predominate planting type on the site.



Pennisetum alopecuroides 'Pennstripe'
Fountain Grass



Dichelachne micrantha
Short-hair Plume Grass



Poa labillardierei
Common Tussock



Poa poiformis 'Kingsdale'
Kingsdale Poa



Microlaena stipoides
Weeping grass



Wahlenbergia stricta 'Blue Mist'
Native Bluebell



Cyperus gunnii
Flecked Flat Sedge



Ficinia nodosa
Knobby Clubrush

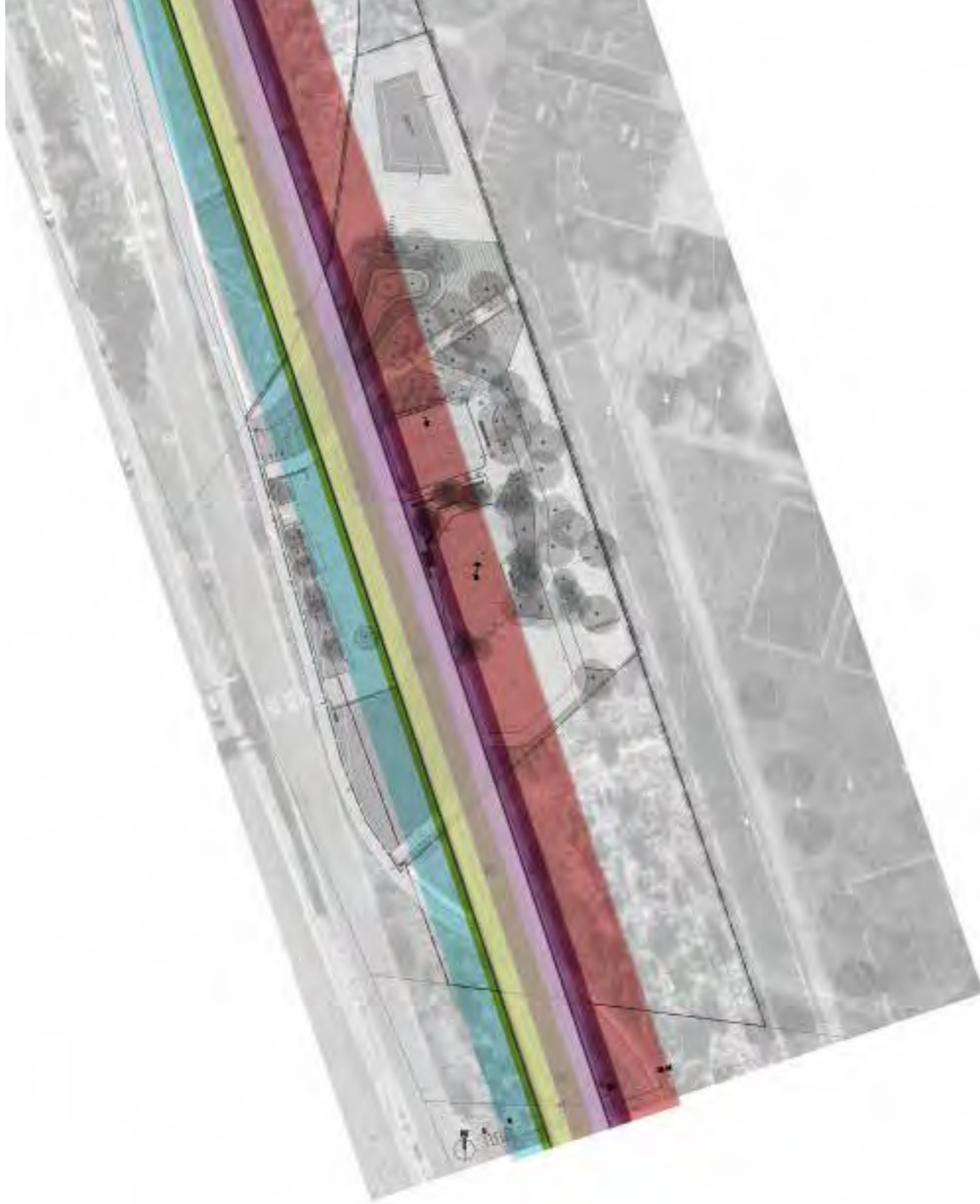


Juncus kraussii
Sea Rush

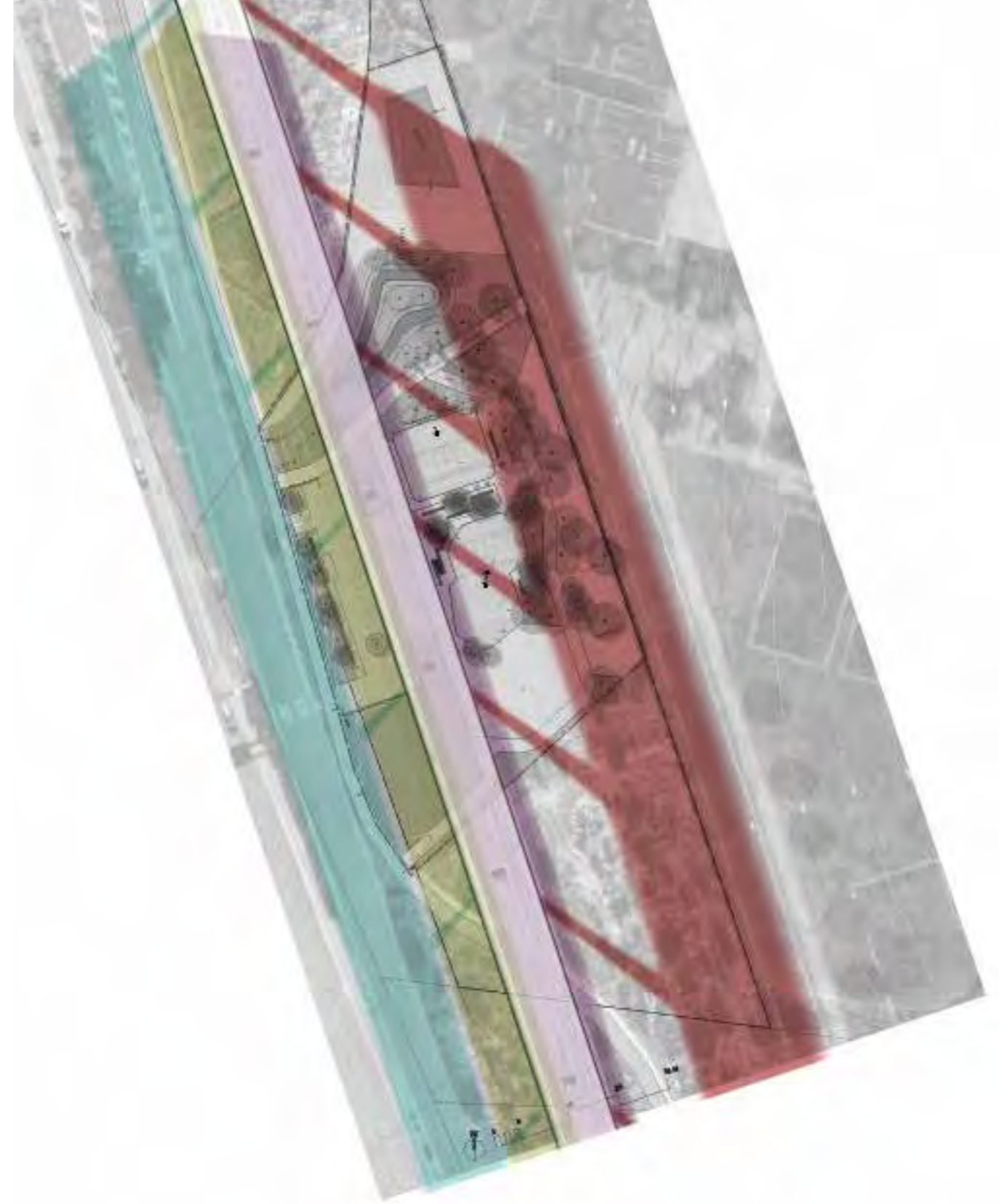
SHADE STUDY

VIADUCT SHADE

SUMMER



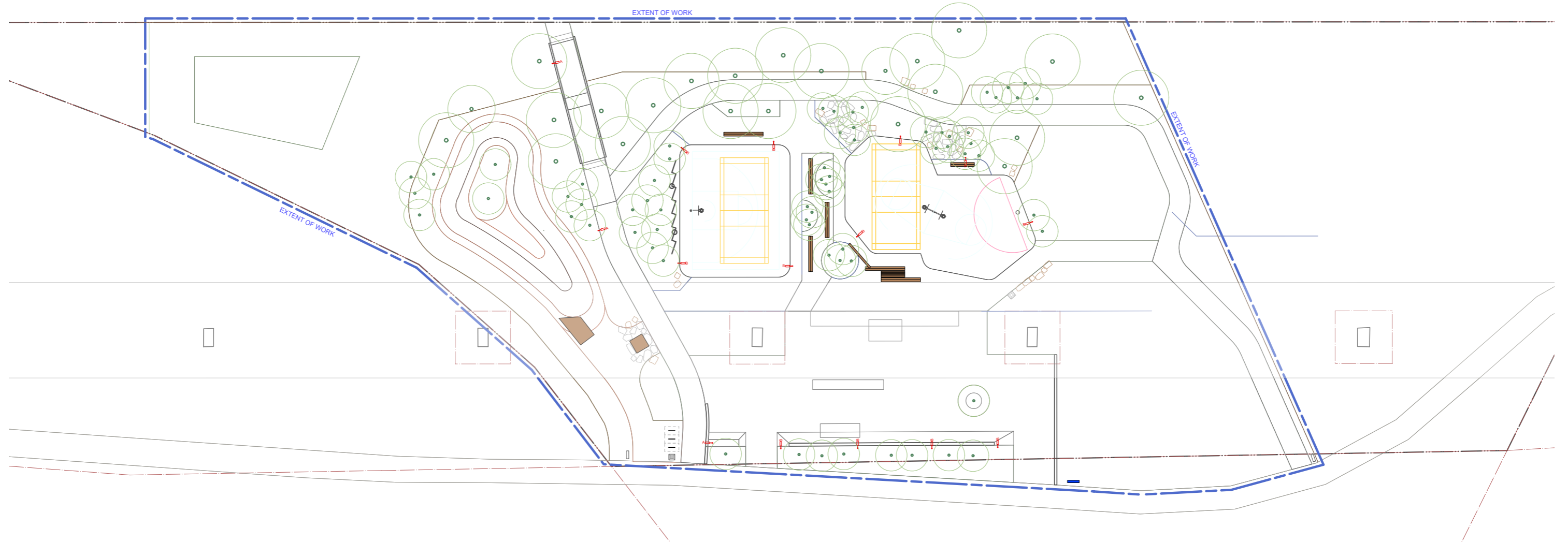
WINTER



LIGHTING CONCEPT

The lighting design intends to provide safe evening uses for the priority areas, including:

- East-west access path connecting the regional shared path and future sport complex
- Informal courts
- Skate plaza



LEGEND:

- A 10W SOLAR LUMINAIRE, MOTION SENSOR CONTROLLED, ON 9M POLE. COMPLETE WITH 60W SOLAR ENGINE AND BATTERY
- B 30W SOLAR LUMINAIRE, MOTION SENSOR CONTROLLED, ON 9M POLE. COMPLETE WITH 60W SOLAR ENGINE AND BATTERY

SPECIFICATION:

1. PATHWAY LIGHTING TO ACHIEVE COMPLIANCE WITH AS1158.3.1 SUBCATEGORY PP3.
2. STAIRS LIGHTING TO ACHIEVE COMPLIANCE WITH AS1158.3.1 SUBCATEGORY PE2.

LIGHTING DATA SHEET



SMART PUBLIC SOLAR LIGHTING

AE3 Series

- Flexible installation
- Sleek & modular design
- 10 + year battery performance

Leadsun's AE3 series is available in either a sleek looking All-In-One model, or a Split system with separate solar/battery module and LED light head with built-in PIR motion sensor.

The split unit is the world's first **International Dark Sky** approved solar lighting product. It's design guarantees perfect PV (photo-voltaic) solar orientation for optimum daytime charging and ensures layered LED light distribution without emitting any upward light pollution.

All-In-One Model

(For North facing solar PV orientation) (Universal installation & Dark Sky approved)



All electronic components of the modular AE3 system are integrated in the 60W or 90W mono-crystalline solar modules. They also house the ingenious patented dual battery system that provides double the life compared to traditional solar lights batteries.

The programmable controller and smart-eye motion sensor provides responsive and autonomous dimming of the LED throughout the night delivering high quality illumination where and when you need it the most.

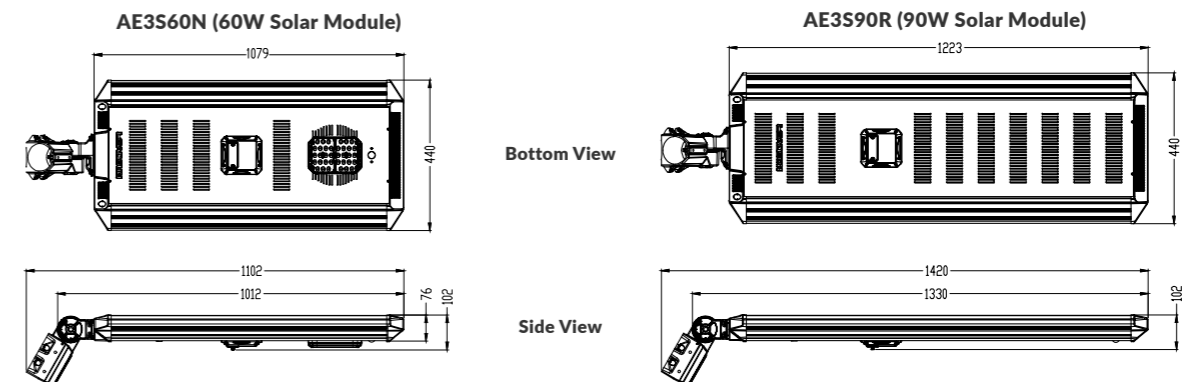
The system can be installed in no-time using our concrete-less footings and lowerable poles, creating a system you can set-and-forget.

Features

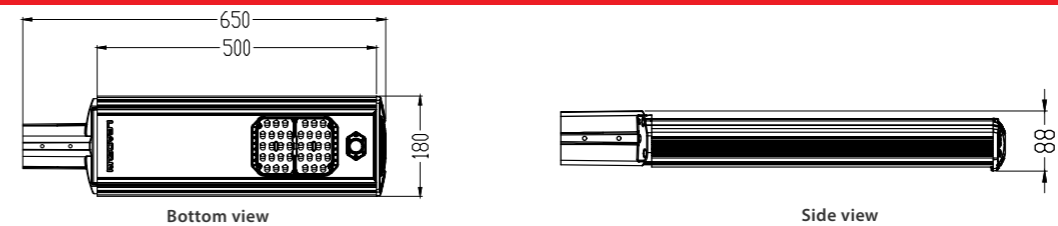
Options	All-In-One or Split
Design	Modular with Fully integrated components
Dark-sky Approval	Split model only
Solar Module	60W/90W Mono-crystalline
Installation	Plug & Play wiring
Pole	Double hot-dipped galvanised. Hinged easy lowering option
Battery	Dual LiFePO4 with patented battery management system
Control	EDGE wireless (Optional), Programmable, adaptive lighting with PIR dimming
Applications	Pathways, streets, small car parks



SOLAR ENGINE MODULE DIMENSIONS (mm)



LED LIGHT HEAD DIMENSIONS (mm)



SOLAR ENGINE TECHNICAL DATA

Model No.	AE3S60N	AE3S90R
Physical Parameters		
Solar module power output (W)	60	90
Lithium battery capacity (Wh)	2 x 154Wh (308Wh)	2 x 308Wh (616Wh)
Net weight of product (kg)	15.3	19.6
Product dimension (mm)	1079(L) x 440(W) x 102(D)	1421(L) x 440(W) x 102(D)
Pole mounting diameter (mm)	55 - 76	55 - 76
System wind speed rating (kph)	178	178
Technical & Operating Parameters		
Battery voltage & cycle life	12.8Vdc/ >5000 cycles	12.8Vdc/ >5000 cycles
Battery charging temperature range	0°C - 60°C	0°C - 60°C
Battery discharging temperature range	-20°C - 60°C	-20°C - 60°C
Controller type	PWM (Programmable via USB)	PWM (Programmable via USB)
Wireless control & monitoring option	Optional	Optional
Photoelectric switch on/off level (lx)	30	30

LED LIGHTHEAD TECHNICAL DATA

Model No.	L3SS10-20	L3SS30-20
Physical Parameters		
Net weight of product (kg)	3.8	3.8
Dimension of product (mm)	680(L) x 128(W) x 74(D)	680(L) x 128(W) x 74(D)
Pole mounting diameter (mm)	60 - 90	60 - 90
Technical & Operating Parameters		
Light output (W)	10	30
LED colour temperature (K)	3000	3000
LED typical luminous flux (lm)	1800	5400
Motion sensor type	Passive Infra Red	Passive Infra Red
LED distribution type	T2/T3	T2/T3

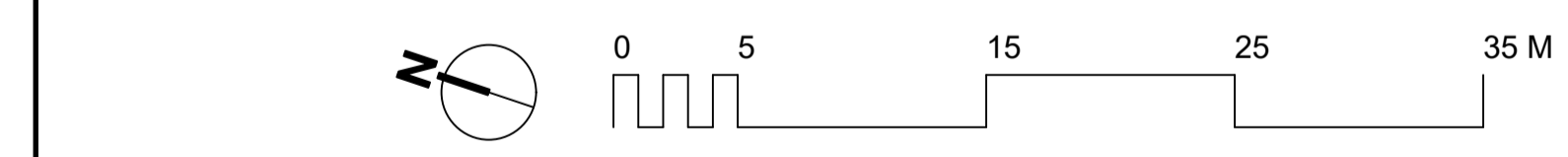
Note: IDA certification requires 3000K CCT or lower and the fixture to be mounted at 90°
 Leadsun Australia Pty Ltd | 42 Greens Rd, Dandenong Sth, VIC 3175 | sales@leadsun.com.au | 1300 532 378 (1300 Leadsun) | www.leadsun.com.au



Datasheet AE3 60 90W 211018

- Insitu aggregated concrete path
- Insitu concrete footpath 2.6m wide
- New trees, refer to tree schedule for species and size. Allow for timber stakes for trees within planting area
- Proprietary basketball sand - single
- Custom sport fence H=3m
- Insitu concrete ramp, SS handrail, tactics
- Insitu concrete ramp retaining wall, max H:300
- Asphalt surfacing
- Mounded compacted and stabilised soil
- Existing contour
- Modified topography
- Turf
- Make good turf
- Timber garden edging along the boundary
- Vegetated detention basin max. depth 300mm

- Typical custom seating furniture: large recycled timber posts (250x250, 350x350), metal support
- Stepping stones flush with ground: mix of irregular sandstone and recycled concrete slabs. Edge length: 300x500-500x1200mm
- Sandstone blocks/boulders: sides - rough/irregular, top - rough, relatively flat for seating 500x500-700x1000, H=300-550
- Concrete court with painted surface and line marking
- Solar pole light type A and B
- Proprietary basketball sand - double
- Custom seating furniture: large recycled timber posts 250x250
- Mass planting 4 plants/m2
- Proprietary netball stand
- Compacted and stabilised decomposed granite sand, allow for galvanised edging at interface with softscape, flush



- Pump track, allow for design and construction
- Custom timber deck ramp(part of pump track design)
- Proprietary park sign
- Insitu concrete retaining wall (part of skatepark design)
- Insitu concrete skate plaza with custom elements
- Service vehicle access
- Insitu concrete retaining wall, max H:300
- Insitu concrete footpath 3m wide
- Proprietary HDG bike racks, proprietary litter bin
- Custom timber seating deck
- Achaeological relic buried
- Native grass 4 plants/m2
- Custom interpretive sign
- Insitu concrete retaining wall (part of skatepark design)
- Proprietary interpretive sign

REV	DATE	AMENDMENTS
A	11/3/22	CONCEPT 100%

DRAWN BY LZ
CHECKED BY AC