

OUR GREATER SYDNEY 2056

# Parramatta City Council

Council snapshot of the revised draft *Central City District Plan*

**The vision for Greater Sydney as a metropolis of three cities — the Western Parkland City, the Central River City and the Eastern Harbour City – means residents in the Central City District will have quicker and easier access to a wider range of jobs, housing types and activities as part of the transformation of their District.**

The Central City District is part of the Central River City. Its extensive rail and road network, relative proximity to Australia's major trade gateways, along with the social connections of its multicultural communities provide links to the region, the country and the world.

The draft *Central City District Plan* guides the transition of the District within the context of Greater Sydney's three cities to improve the District's social, economic and environmental assets.

The District is one of the most dynamic and rapidly growing regions in Australia. It plays a pivotal role in Greater Sydney's future as an economic

and employment powerhouse, a core hub for transport and services, and the home of vibrant and diverse centres and communities. It will be at the core of Greater Sydney's Central River City.

Parramatta CBD will be the driver of the Central River City and will be one of the top five CBDs in Australia.

The draft District Plan guides this growth and transition by capitalising on unprecedented city-scale infrastructure investments in transport, public domain, sporting and cultural institutions attracting large businesses. Greater Parramatta and the Olympic Peninsula (GPOP) will be a focus of development, jobs and skills growth.

Transport connections radiating north, south, east and west from Parramatta will optimise its locational advantage, improve business-to-business connections and provide quicker access for a larger number of skilled workers to businesses in Parramatta.

The Westmead health and education precinct will transition to an innovation district with greater diversity of knowledge-intensive jobs. People will have easy access to walking and cycling paths through Parramatta Park and Parramatta River to move between Westmead, Parramatta CBD and Parramatta North.

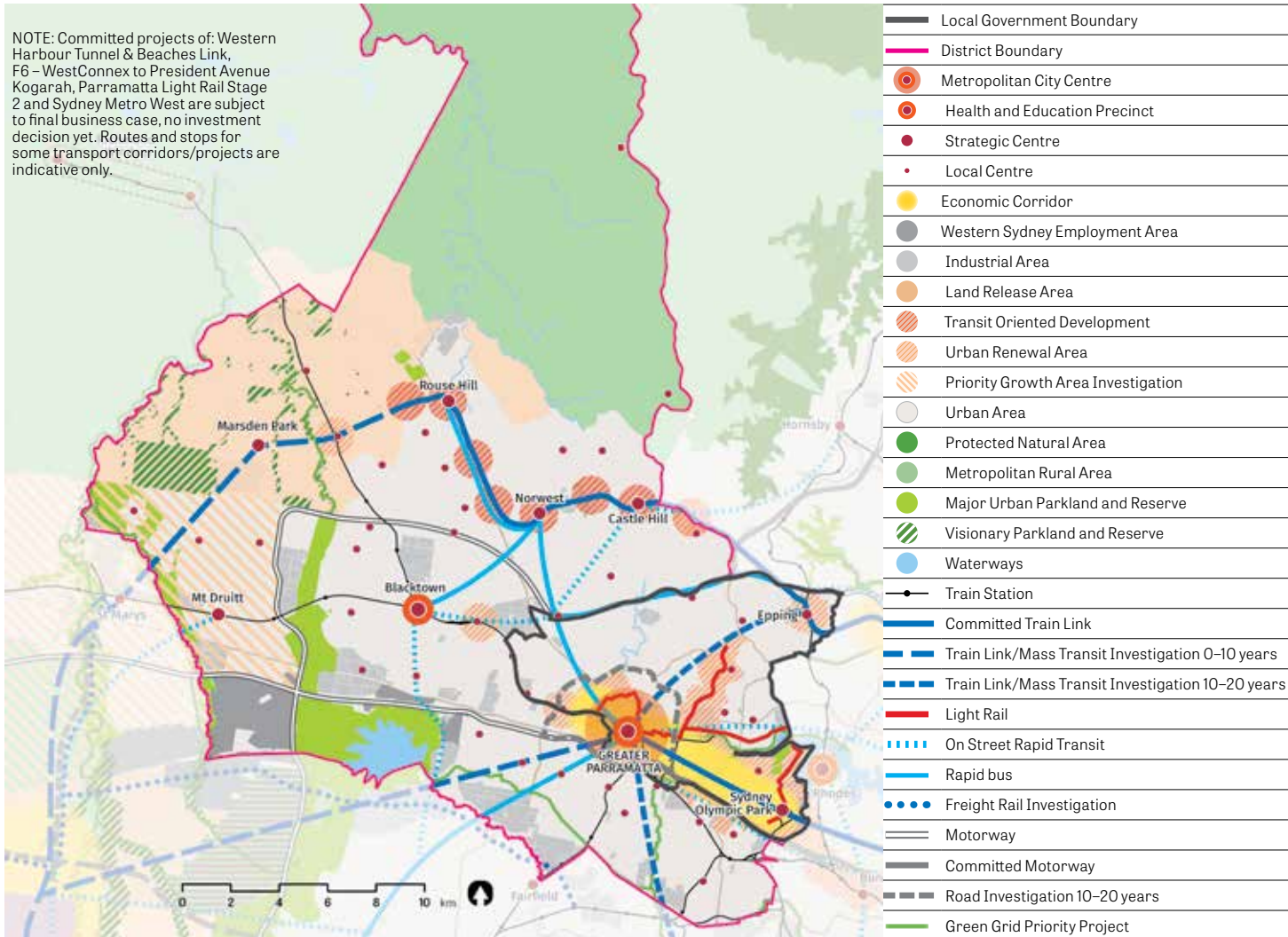
A 21st century clean-tech and advanced manufacturing cluster in precincts such as Camellia, Rydalmere, Silverwater and Auburn and the protection of industrial and urban services land will provide new skilled jobs to reinforce the Central River City's development.

Throughout the District's transition, cohesive and socially dynamic communities will be supported by new social infrastructure such as schools and community services, new cultural and sporting facilities, and the protection and enhancement of natural landscapes through the Greater Sydney Green Grid.

The quality of the Central City District's waterways such as Parramatta River, Duck River and South Creek will be enhanced.

# Parramatta City Council

NOTE: Committed projects of: Western Harbour Tunnel & Beaches Link, F6 – WestConnex to President Avenue Kogarah, Parramatta Light Rail Stage 2 and Sydney Metro West are subject to final business case, no investment decision yet. Routes and stops for some transport corridors/projects are indicative only.



## Housing Parramatta City Council

**Housing supply target (2016-2021): 21,650**

Actions	Responsibility
<p><b>15. Prepare local or district housing strategies that address the following:</b></p> <ul style="list-style-type: none"> <li>a. the delivery of five-year housing supply targets for each local government area</li> <li>b. the delivery of 6-10 year (when agreed) housing supply targets for each local government area</li> <li>c. capacity to contribute to the longer term 20-year strategic housing target for the District</li> <li>d. housing strategy requirements outlined in Objective 10 of the draft <i>Greater Sydney Region Plan</i> that include:               <ul style="list-style-type: none"> <li>i. creating capacity for more housing in the right locations</li> <li>ii. supporting planning and delivery of priority growth areas and precincts as relevant to each local government area</li> <li>iii. supporting investigation of opportunities for alignment with investment in regional and district infrastructure</li> <li>iv. supporting the role of centres.</li> </ul> </li> </ul>	Parramatta City Council
<p><b>16. Prepare Affordable Rental Housing Target schemes.</b></p>	Councils and other planning authorities

## Greater Parramatta Metropolitan City Centre

### Job targets

2016 estimate: **83,400**

2036 baseline target: **139,000**

2036 higher target: **151,500**

Action	Responsibility
<p><b>24. Strengthen the economic competitiveness of Greater Parramatta and grow its vibrancy by:</b></p> <ul style="list-style-type: none"> <li>a. competitive health and education precinct at Westmead</li> <li>b. creating opportunities for an expanded office market</li> <li>c. balancing residential development with the needs of commercial development</li> <li>d. providing for a wide range of cultural, entertainment, arts and leisure activities</li> <li>e. improving the quality of Parramatta Park and Parramatta River and their walking and cycling connections to the Parramatta CBD</li> <li>f. providing for a diverse and vibrant night-time economy, in a way that responds to potential negative impacts.</li> </ul>	<p>Parramatta City Council, NSW Health and other planning authorities</p>
<p><b>25. Revitalise Hawkesbury Road so that it becomes the civic, transport, commercial and community heart of Westmead.</b></p>	<p>Parramatta City Council, NSW Health and other planning authorities</p>
<p><b>26. Support emergency services transport, including helicopter access.</b></p>	<p>Parramatta City Council, NSW Health and other planning authorities</p>
<p><b>27. Prioritise:</b></p> <ul style="list-style-type: none"> <li>a. public transport investment to improve connectivity to Greater Parramatta from the Harbour CBD, Sydney Olympic Park, Westmead, Macquarie Park, Norwest and Kogarah via Bankstown</li> <li>b. infrastructure investments which enhance walkability and cycling, particularly those focused on access to the transport network, and within five kilometres of any strategic centre or 10 kilometres of Greater Parramatta.</li> </ul>	<p>Parramatta City Council, other planning authorities, State agencies and State-owned corporations</p>
<p><b>28. Manage car parking and identify smart traffic management strategies.</b></p>	<p>Parramatta City Council, NSW Health and other planning authorities</p>
<p><b>29. Investigate opportunities for renewal of Westmead East as a mixed-use precinct.</b></p>	<p>Parramatta City Council, NSW Health and other planning authorities</p>

## Epping Strategic Centre

### Job targets

2016 estimate: **5,100**

2036 baseline target: **7,000**

2036 higher target: **7,500**

Action	Responsibility
<p><b>43. Continue the review of planning controls for Epping in collaboration with State agencies.</b></p>	<p>Parramatta City Council, other planning authorities and State agencies</p>

## Sydney Olympic Park Strategic Centre

### Job targets

2016 estimate: **31,100**

2036 baseline target: **45,000**

2036 higher target: **46,500**

Action	Responsibility
<p><b>49. Strengthen Sydney Olympic Park through approaches that:</b></p> <ul style="list-style-type: none"> <li>a. explore opportunities to attract public and private sports, health and physical education and tertiary education facilities as anchor tenants to activate the Sydney Olympic Park Town Centre</li> <li>b. coordinate land use and infrastructure planning around the future Parramatta Light Rail Stage 2 and Sydney Metro West stations at Olympic Park.</li> </ul>	<p>Parramatta City Council, other planning authorities and State agencies</p>

The draft *Central City District Plan* implements the objectives, strategies and actions of the draft *Greater Sydney Region Plan*, by outlining how they will be applied through a set of planning priorities and actions for the District.

## Planning Priorities for the Central City District

---

- **Planning Priority C1:** Planning for a city supported by infrastructure
- **Planning Priority C2:** Working through collaboration
- **Planning Priority C3:** Providing services and social infrastructure to meet people's changing needs
- **Planning Priority C4:** Fostering healthy, creative, culturally rich and socially connected communities
- **Planning Priority C5:** Providing housing supply, choice and affordability, with access to jobs and services
- **Planning Priority C6:** Creating and renewing great places and local centres, and respecting the District's heritage
- **Planning Priority C7:** Growing a stronger and more competitive Greater Parramatta
- **Planning Priority C8:** Delivering a more connected and competitive GPOP Economic Corridor
- **Planning Priority C9:** Delivering integrated land use and transport planning and a 30-minute city
- **Planning Priority C10:** Growing investment, business and jobs opportunities in strategic centres
- **Planning Priority C11:** Maximising opportunities to attract advanced manufacturing and innovation in industrial and urban services land
- **Planning Priority C12:** Supporting growth of targeted industry sectors
- **Planning Priority C13:** Protecting and improving the health and enjoyment of the District's waterways
- **Planning Priority C14:** Creating a Parkland City urban structure and identity, with South Creek as a defining spatial element
- **Planning Priority C15:** Protecting and enhancing bushland and biodiversity
- **Planning Priority C16:** Increasing urban tree canopy cover and delivering Green Grid connections
- **Planning Priority C17:** Delivering high quality open space
- **Planning Priority C18:** Better managing rural areas
- **Planning Priority C19:** Reducing carbon emissions and managing energy, water and waste efficiently
- **Planning Priority C20:** Adapting to the impacts of urban and natural hazards and climate change

## How to be involved

---

The revised draft *Central City District Plan* is on formal public exhibition until 15th of December 2017. You can read the entire updated draft District Plan at: [www.greater.sydney](http://www.greater.sydney)

Find out more about making a submission by visiting: [www.greater.sydney/submissions](http://www.greater.sydney/submissions)

Before making a submission, please read the privacy statement at: [www.greater.sydney/privacy](http://www.greater.sydney/privacy)