

OUR GREATER SYDNEY 2056

# Northern Beaches Council

Council snapshot of the draft *North District Plan*

**The vision for Greater Sydney as a metropolis of three cities – the Western Parkland City, the Central River City and the Eastern Harbour City – means residents in the North District will have quicker and easier access to a wider range of jobs, housing types and activities.**

The North District is part of the Eastern Harbour City. Its expansive national parks, waterways and beaches provide a natural setting for its vibrant, productive centres and strong community connections.

The District comprises geographically diverse, economically strong and environmentally aware communities who value and embrace progress, the local landscape and a great quality of life.

The draft *North District Plan* guides the growth of the District within the context of the metropolis of three cities to improve the District's social,

economic and environmental assets. The draft Plan guides this growth by protecting the District's many lifestyle assets – from the bush, to its world-class beaches and Sydney Harbour, its vibrant local centres and heritage.

The District will attract even more local, domestic and international visitors as this thriving modern economy grows and coexists within beautiful, natural landscapes.

Housing and jobs will be targeted in the right places, aligned to new and enhanced infrastructure. Sydney Metro will create fast and efficient rail connections to both the Harbour CBD in the south and the growing communities in the northwest, while re-energising centres along its corridor.

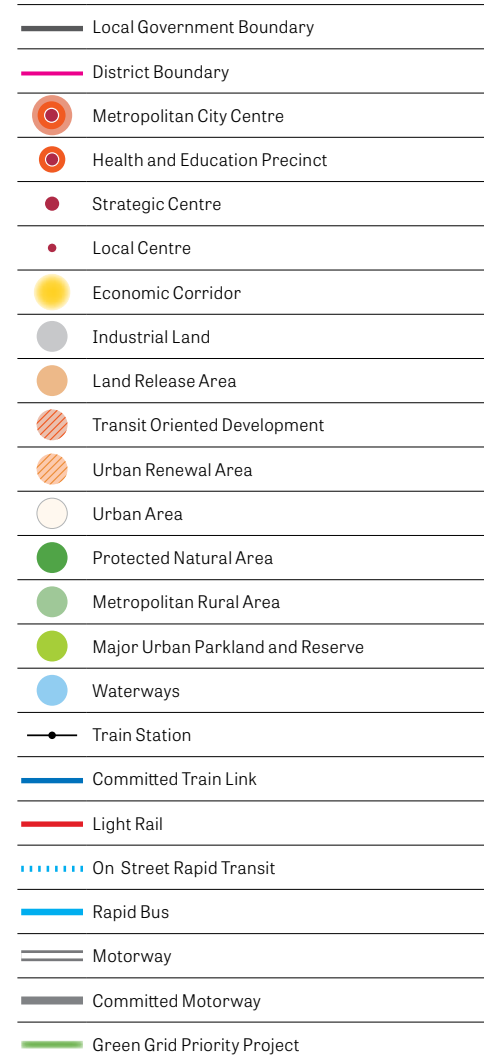
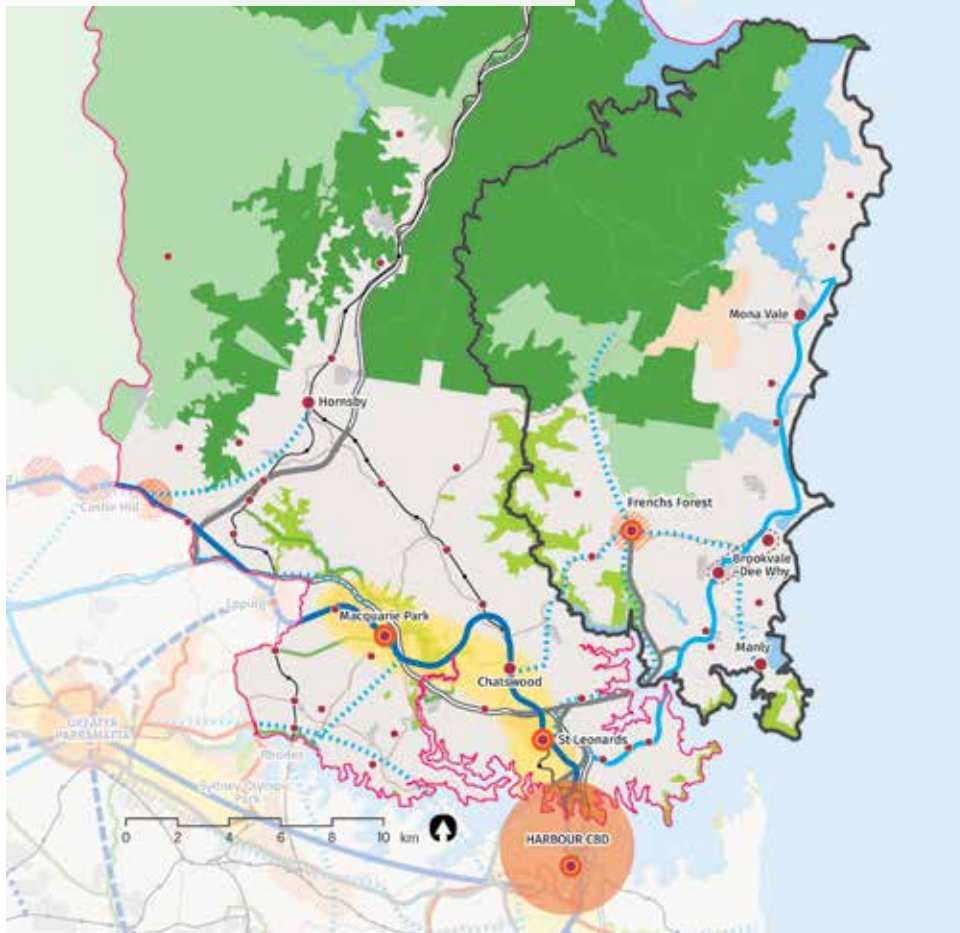
Economic growth and a greater diversity of jobs will be targeted in the strategic centres of St Leonards, Chatswood, Macquarie Park, Brookvale-Dee Why, Hornsby and in Manly and Mona Vale as required. The Northern Beaches Hospital at Frenchs Forest will significantly boost the District's businesses and jobs in the health sector.

North Sydney's commercial core will be enhanced to strengthen the District's economic links to the Harbour CBD and its role in the Eastern Economic Corridor. North Sydney's neighbourhoods and lifestyle assets will continue to provide housing close to jobs, services and infrastructure, and give the area a unique character.

The North District will have new networks for walking and cycling both within and between strategic centres, along main roads, and along the coast from Manly through to Palm Beach. It will also have networks of open space and urban tree canopy as the Greater Sydney Green Grid is developed.

# Northern Beaches Council

NOTE: Committed projects of: Western Harbour Tunnel & Beaches Link, F6 – WestConnex to President Avenue Kogarah, Parramatta Light Rail Stage 2 and Sydney Metro West are subject to final business case, no investment decision yet. Routes and stops for some transport corridors/projects are indicative only.




## Housing Northern Beaches Council

**Housing supply target (2016-2021): 3,400**

Action	Responsibility
<p><b>15. Prepare local or district housing strategies that address the following:</b></p> <ul style="list-style-type: none"> <li>a. the delivery of five-year housing supply targets for each local government area</li> <li>b. the delivery of 6-10 year (when agreed) housing supply targets for each local government area</li> <li>c. capacity to contribute to the longer term 20-year strategic housing target for the District</li> <li>d. housing strategy requirements outlined in Objective 10 of the draft <i>Greater Sydney Region Plan</i> that include:               <ul style="list-style-type: none"> <li>i. creating capacity for more housing in the right locations</li> <li>ii. supporting planning and delivery of priority growth areas and precincts as relevant to each local government area</li> <li>iii. supporting investigation of opportunities for alignment with investment in regional and district infrastructure</li> <li>iv. supporting the role of centres.</li> </ul> </li> </ul>	Northern Beaches Council
<p><b>16. Prepare Affordable Rental Housing Target schemes.</b></p>	Councils and other planning authorities


## Brookvale-Dee Why Strategic Centre

 **Job targets**      2016 estimate: **20,000**      2036 baseline target: **23,000**      2036 higher target: **26,000**


 <b>Action 38. Strengthen Brookvale-Dee Why through approaches that:</b>	<b>Responsibility</b>
<ul style="list-style-type: none"> <li>a. maintain the mix of uses so that Brookvale-Dee Why continues to perform strongly as a well-balanced, self-sustaining combined centre</li> <li>b. encourage and support improvements to Warringah Mall and better integrate it with the fabric and life of Brookvale-Dee Why</li> <li>c. recognise and enhance the economic and employment opportunities along Pittwater Road and encourage revitalisation along the commercial strip</li> <li>d. promote walking, cycling and public transport to Warringah Mall, the Brookvale industrial area and Dee Why</li> <li>e. encourage the establishment of new, innovative and creative industries in the Brookvale industrial area</li> <li>f. encourage new lifestyle and entertainment uses to activate local streets in Brookvale-Dee Why</li> <li>g. improve connections between Brookvale-Dee Why and the Northern Beaches Hospital at Frenchs Forest.</li> </ul>	Northern Beaches Council, relevant planning authorities and State agencies


## Frenchs Forest Strategic Centre

 **Job targets**      2016 estimate: **9,300**      2036 baseline target: **12,000**      2036 higher target: **13,000**

 <b>Action 31. Strengthen Frenchs Forest through approaches that:</b>	<b>Responsibility</b>
<ul style="list-style-type: none"> <li>a. leverage the investment in the Northern Beaches Hospital to provide a vibrant and well connected strategic centre</li> <li>b. deliver an urban core with a mix of commercial and residential uses and community facilities</li> <li>c. provide new housing, including affordable housing</li> <li>d. encourage walkability and cycling within the precinct</li> <li>e. enhance the natural setting of the area by embellishing existing open space</li> <li>f. attract new, innovative health and medical related commercial premises to support the hospital</li> <li>g. reinforce the centre as an employment hub for the Northern Beaches, building on the existing business park east of the Wakehurst Parkway</li> <li>h. continue to investigate a high frequency public transport link, in partnership with State agencies.</li> </ul>	NSW Department of Planning and Environment, State agencies, Greater Sydney Commission, NSW Health and Northern Beaches Council


## Manly Strategic Centre

 **Job targets**      2016 estimate: **5,000**      2036 baseline target: **6,000**      2036 higher target: **6,500**

 <b>Action 41. Strengthen Manly through approaches that:</b>	<b>Responsibility</b>
<ul style="list-style-type: none"> <li>a. further develop Manly as a cultural, tourist, retail and entertainment precinct</li> <li>b. improve public transport connections to Manly Wharf from other lower Northern Beaches suburbs</li> <li>c. provide improved public transport to Chatswood, Frenchs Forest, St Leonards, Macquarie Park and Macquarie University</li> <li>d. encourage diversified commercial activity to improve economic resilience</li> <li>e. encourage eco-tourism around North Head and the Cabbage Tree Bay Aquatic Reserve.</li> </ul>	Northern Beaches Council, other planning authorities and State agencies

## Mona Vale Strategic Centre

 **Job targets**      2016 estimate: **4,300**      2036 baseline target: **5,000**      2036 higher target: **6,000**

 <b>Action 42. Strengthen Mona Vale through approaches that:</b>	<b>Responsibility</b>
<ul style="list-style-type: none"> <li>a. protect and enhance the commercial and retail function of the centre to provide employment growth and maintain high job containment</li> <li>b. ensure sufficient retail and commercial floor space is provided to meet future demand</li> <li>c. leverage Mona Vale's role as a north-south and east-west bus interchange to facilitate a greater diversity of employment and mixed uses in the centre</li> <li>d. improve access and linkages to local destinations, such as Mona Vale Hospital, through priority pedestrian networks</li> <li>e. promote walking and cycling to and within the centre</li> <li>f. retain and protect the industrial precinct to the north of the centre to serve the growing population</li> <li>g. prioritise place making and urban activation, including enlivening the centre.</li> </ul>	Northern Beaches Council, other planning authorities and State agencies

The draft *North District Plan* implements the objectives, strategies and actions of the draft *Greater Sydney Region Plan*, by outlining how they will be applied through a set of planning priorities and actions for the District.

## Planning Priorities for the North District

---

- **Planning Priority N1:** Planning for a city supported by infrastructure
- **Planning Priority N2:** Working through collaboration
- **Planning Priority N3:** Providing services and social infrastructure to meet people's changing needs.
- **Planning Priority N4:** Fostering healthy, creative, culturally rich and socially connected communities
- **Planning Priority N5:** Providing housing supply, choice and affordability, with access to jobs and services
- **Planning Priority N6:** Creating and renewing great places and local centres, and respecting the District's heritage
- **Planning Priority N7:** Growing a stronger and more competitive Harbour CBD
- **Planning Priority N8:** Eastern Economic Corridor is better connected and more competitive
- **Planning Priority N9:** Growing and investing in health and education precincts
- **Planning Priority N10:** Growing investment, business and jobs opportunities in strategic centres
- **Planning Priority N11:** Protecting and managing industrial and urban services land
- **Planning Priority N12:** Delivering integrated land use and transport planning and a 30-minute city
- **Planning Priority N13:** Supporting growth of targeted industry sectors
- **Planning Priority N14:** Leveraging inter-regional transport connections
- **Planning Priority N15:** Protecting and improving the health and enjoyment of Sydney Harbour and the District's waterways
- **Planning Priority N16:** Protecting and enhancing bushland and biodiversity
- **Planning Priority N17:** Protecting and enhancing scenic and cultural landscapes
- **Planning Priority N18:** Better managing rural areas
- **Planning Priority N19:** Increasing urban tree canopy cover and delivering Green Grid connections
- **Planning Priority N20:** Delivering high quality open space
- **Planning Priority N21:** Reducing carbon emissions and managing energy, water and waste efficiently
- **Planning Priority N22:** Adapting to the impacts of urban and natural hazards and climate change

## How to be involved

---

The updated draft *North District Plan* is on formal public exhibition until 15 December 2017. You can read the entire updated draft District Plan at: [www.greater.sydney](http://www.greater.sydney)

Find out more about making a submission by visiting: [www.greater.sydney/submissions](http://www.greater.sydney/submissions)

Before making a submission, please read the privacy statement at: [www.greater.sydney/privacy](http://www.greater.sydney/privacy)