

OUR GREATER SYDNEY 2056

Liverpool City Council

Council snapshot of the draft *Western City District Plan*

The vision for Greater Sydney as a metropolis of three cities – the Western Parkland City, the Central River City and the Eastern Harbour City – means residents in the Western City District will have quicker and easier access to a wider range of jobs, housing types and activities.

The Western City District is part of the Western Parkland City. It connects to the Central River City through Blacktown and Hawkesbury local government areas. The Western Sydney Airport and Badgerys Creek Aerotropolis will create a once-in-a-generation economic boom, bringing infrastructure, businesses and knowledge-intensive jobs for residents.

The draft *Western City District Plan* guides the growth of the District within the context of Greater Sydney's three cities to improve the District's social, economic and environmental assets.

The District's unique and rich tapestry of urban, rural and natural environments, combined with access to jobs, quality health care, education, recreation, cultural and natural

experiences creates a great quality of life for its communities.

It is a place where opportunity, success and prosperity are forged from humble beginnings, where innovation thrives, smart jobs are created, international business connections are established and global investment is supported. Local people form the basis of a highly skilled and educated workforce that continues to grow and invest in itself and its future.

The draft District Plan guides the District's transformation into the Western Parkland City over the next 20 to 40 years by building on the communities and natural assets that exist today. In contrast to the dormitory neighbourhoods of the past, the new Western Parkland City will be more contained, with a greater choice of local jobs, and transport and services aligned with growth.

The District will be polycentric, with the strong relationship and collaboration between Liverpool, Greater Penrith and Campbelltown-Macarthur reinforced by the emerging Badgerys Creek Aerotropolis. This unique metropolitan city cluster will be connected by high quality public transport.

Unprecedented transport investments will provide major links for people and

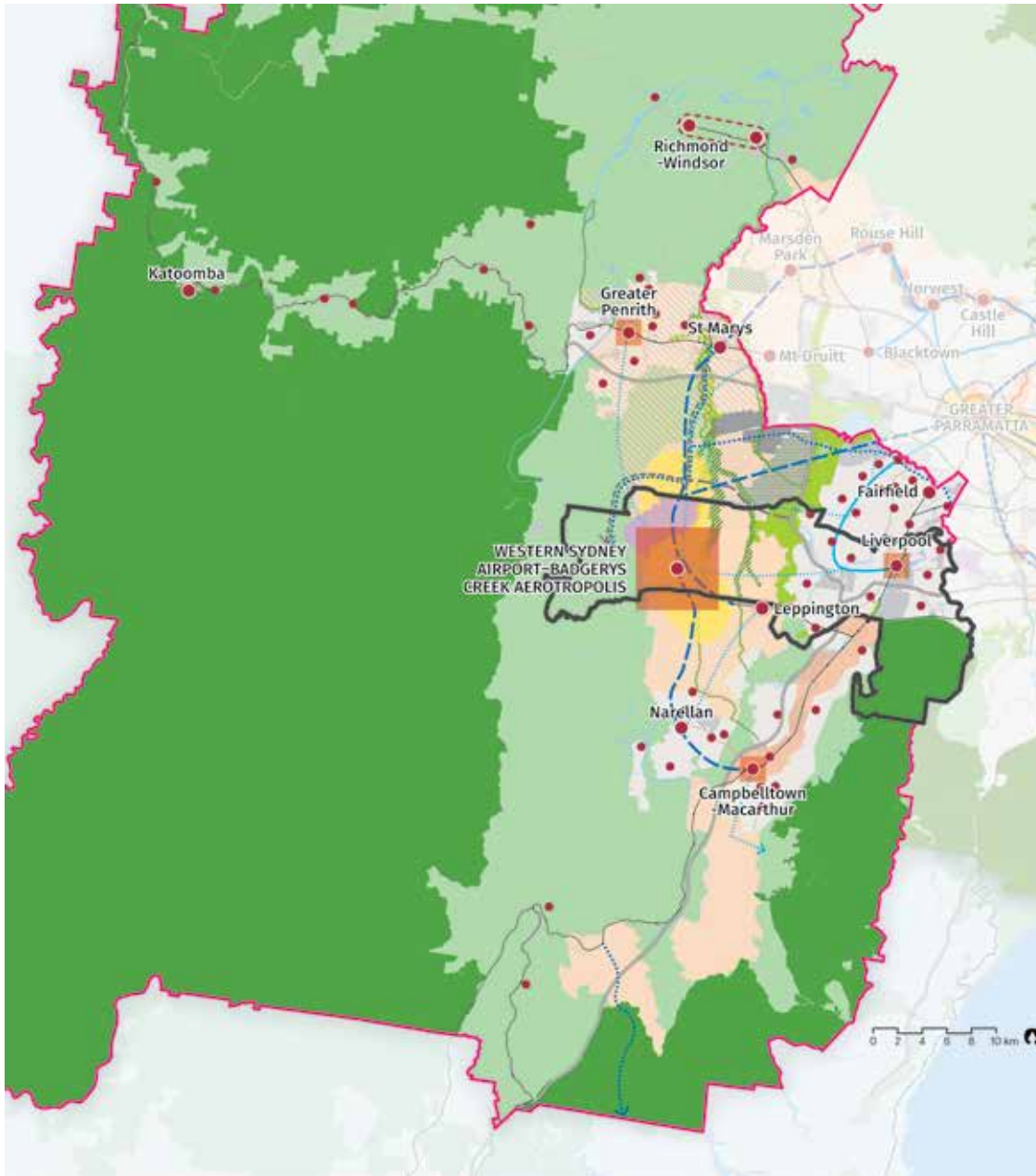
freight between the District's strategic centres, and to Greater Sydney's north and south, not only to traditional economic anchors in the east.

The South Creek, Georges River and Hawkesbury-Nepean River systems will become the spatial framework for the District, with attractive and safe walking and cycling paths, bushland and a green, urban landscape framed by the Greater Blue Mountains World Heritage Area.

Extensive urban tree canopy will mitigate the heat island effect and provide cooler, more beautiful places. The substantial land release areas to house the District's new residents will become neighbourhoods with a range of housing types, access to public transport and infrastructure including schools, hospitals and community facilities.

The District will retain its unique rural areas and the economic benefits of rural land so close to a metropolis, and protect its natural areas, heritage and tourism assets and the unique character of its smaller centres and villages.

Liverpool City Council



Local Government Boundary	Trade Gateway	Urban Area	Train Link / Mass Transit Investigation 10-20 years
District Boundary	Western Sydney Employment Area	Protected Natural Area	Freight Rail Investigation
Metropolitan City Cluster	Industrial Land	Metropolitan Rural Area	On Street Rapid Transit
Health and Education Precinct	Land Release Area	Major Urban Parkland and Reserve	Rapid Bus
Strategic Centre	Urban Renewal Area	Visionary Parkland and Reserve	Motorway
Local Centre	Priority Growth Area Investigation	Train Station	Road Investigation 0-10 years
Economic Corridor	Urban Investigation Area	Train Link / Mass Transit Investigation 0-10 years	Road Investigation 10-20 years

NOTE: Committed projects of: Western Harbour Tunnel & Beaches Link, F6 – WestConnex to President Avenue Kogarah, Parramatta Light Rail Stage 2 and Sydney Metro West are subject to final business case, no investment decision yet. Routes and stops for some transport corridors/projects are indicative only.


Housing Liverpool City Council

 **Housing supply target (2016-2021): 8,250**

 Actions	Responsibility
<p>15. Prepare local or district housing strategies that address the following:</p> <ul style="list-style-type: none"> a. the delivery of five-year housing supply targets for each local government area b. the delivery of 6-10 year (when agreed) housing supply targets for each local government area c. capacity to contribute to the longer term 20-year strategic housing target for the District d. housing strategy requirements outlined in Objective 10 of the draft <i>Greater Sydney Region Plan</i> that include: <ul style="list-style-type: none"> i. creating capacity for more housing in the right locations ii. supporting planning and delivery of priority growth areas and precincts as relevant to each local government area iii. supporting investigation of opportunities for alignment with investment in regional and district infrastructure iv. supporting the role of centres. 	Liverpool City Council
<p>16. Prepare Affordable Rental Housing Target schemes.</p>	Councils and other planning authorities

Liverpool Metropolitan City Cluster

 Job targets	2016 estimate:	2036 baseline target:	2036 higher target:
	29,000	36,000	39,000

 Actions	Responsibility
<p>37. In addition to the Collaboration Area process, carry out the following:</p> <ul style="list-style-type: none"> a. protect, develop and expand the commercial core b. improve and coordinate transport and other infrastructure to support jobs growth c. develop smart jobs around the health and education precinct d. build on the centre's administrative and civic role e. improve public domain including tree-lined, comfortable open spaces and outdoor dining f. improve connectivity and links to the Georges River and prioritise pedestrian, cycle and public transport facilities g. encourage a vibrant mix of uses, new lifestyle and entertainment uses to activate streets and grow the night-time economy h. capitalise on the Western Sydney Airport and Western Sydney City Deal initiatives. 	Liverpool City Council, Greater Sydney Commission and other planning authorities.

Leppington Strategic Centre

 Job targets	2016 estimate:	2036 baseline target:	2036 higher target:
	400	7,000	12,500

 Actions	Responsibility
<p>50. Strengthen Leppington through approaches that:</p> <ul style="list-style-type: none"> a. develop a masterplan for the Leppington town centre in collaboration with Camden and Liverpool City Councils, stakeholders and the community b. coordinate the release and rezoning of land for residential, employment and other urban development in Leppington town centre in accordance with the State Environmental Planning Policy (Sydney Region Growth Centres) 2006 and to support the District Plan's housing and employment targets c. coordinate and deliver enabling infrastructure to support future development. 	NSW Department of Planning and Environment, Camden Council, Liverpool City Council, other planning authorities and State agencies

The draft *Western City District Plan* implements the objectives, strategies and actions of the draft *Greater Sydney Region Plan*, by outlining how they will be applied through a set of planning priorities and actions for the District.

Planning Priorities for the Western City District

- **Planning Priority W1:** Planning for a city supported by infrastructure
- **Planning Priority W2:** Working through collaboration
- **Planning Priority W3:** Providing services and social infrastructure to meet people's changing needs
- **Planning Priority W4:** Fostering healthy, creative, culturally rich and socially connected communities
- **Planning Priority W5:** Providing housing supply, choice and affordability, with access to jobs and services
- **Planning Priority W6:** Creating and renewing great places and local centres, and respecting the District's heritage
- **Planning Priority W7:** Establishing the land use and transport structure to deliver a liveable, productive and sustainable Western Parkland City
- **Planning Priority W8:** Leveraging industry opportunities from the Western Sydney Airport and Badgerys Creek Aerotropolis
- **Planning Priority W9:** Growing and strengthening the metropolitan city cluster
- **Planning Priority W10:** Maximising freight and logistics opportunities and planning and managing industrial and urban services land
- **Planning Priority W11:** Growing investment, business opportunities and jobs in strategic centres
- **Planning Priority W12:** Protecting and improving the health and enjoyment of the District's waterways
- **Planning Priority W13:** Creating a Parkland City urban structure and identity, with South Creek as a defining spatial element
- **Planning Priority W14:** Protecting and enhancing bushland and biodiversity
- **Planning Priority W15:** Increasing the urban tree canopy cover and delivering Green Grid connections
- **Planning Priority W16:** Protecting and enhancing scenic and cultural landscapes
- **Planning Priority W17:** Better managing rural areas
- **Planning Priority W18:** Delivering high quality open space
- **Planning Priority W19:** Reducing carbon emissions and managing energy, water and waste efficiently
- **Planning Priority W20:** Adapting to the impacts of urban and natural hazards and climate change

How to be involved

The draft *Western City District Plan* is on formal public exhibition until 15 December 2017. You can read the entire updated draft District Plan at: www.greater.sydney

Find out more about making a submission by visiting: www.greater.sydney/submissions

Before making a submission, please read the privacy statement at: www.greater.sydney/privacy