

OUR GREATER SYDNEY 2056

Fairfield City Council

Council snapshot of the draft *Western City District Plan*

The vision for Greater Sydney as a metropolis of three cities – the Western Parkland City, the Central River City and the Eastern Harbour City – means residents in the Western City District will have quicker and easier access to a wider range of jobs, housing types and activities.

The Western City District is part of the Western Parkland City. It connects to the Central River City through Blacktown and Fairfield local government areas. The Western Sydney Airport and Badgerys Creek Aerotropolis will create a once-in-a-generation economic boom, bringing infrastructure, businesses and knowledge-intensive jobs for residents.

The draft *Western City District Plan* guides the growth of the District within the context of Greater Sydney's three cities to improve the District's social, economic and environmental assets.

The District's unique and rich tapestry of urban, rural and natural environments, combined with access to jobs, quality health care, education, recreation, cultural and natural

experiences creates a great quality of life for its communities.

It is a place where opportunity, success and prosperity are forged from humble beginnings, where innovation thrives, smart jobs are created, international business connections are established and global investment is supported. Local people form the basis of a highly skilled and educated workforce that continues to grow and invest in itself and its future.

The draft District Plan guides the District's transformation into the Western Parkland City over the next 20 to 40 years by building on the communities and natural assets that exist today. In contrast to the dormitory neighbourhoods of the past, the new Western Parkland City will be more contained, with a greater choice of local jobs, and transport and services aligned with growth.

The District will be polycentric, with the strong relationship and collaboration between Liverpool, Greater Penrith and Campbelltown-Macarthur reinforced by the emerging Badgerys Creek Aerotropolis. This unique metropolitan city cluster will be connected by high quality public transport.

Unprecedented transport investments will provide major links for people and

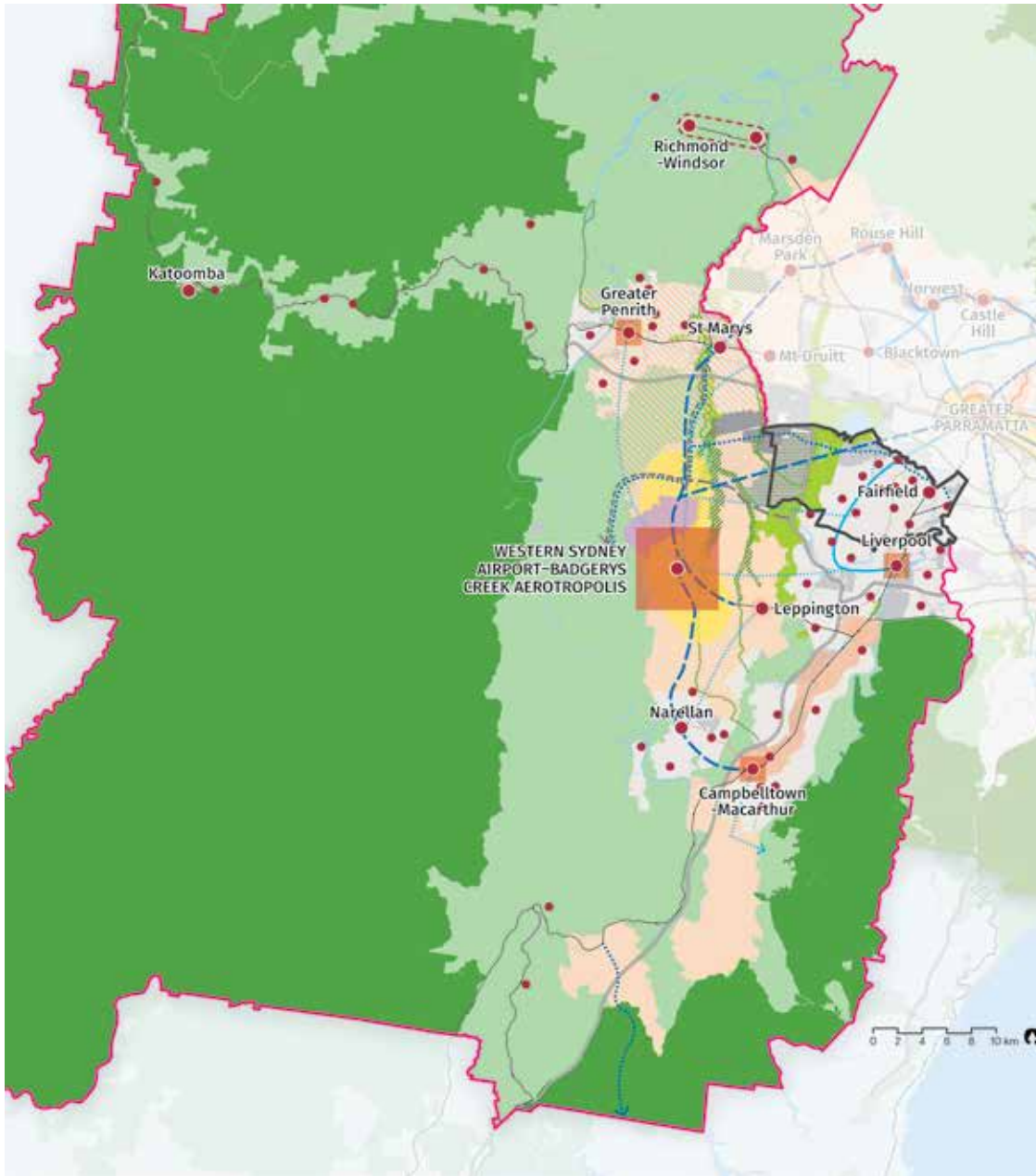
freight between the District's strategic centres, and to Greater Sydney's north and south, not only to traditional economic anchors in the east.

The South Creek, Georges River and Hawkesbury-Nepean River systems will become the spatial framework for the District, with attractive and safe walking and cycling paths, bushland and a green, urban landscape framed by the Greater Blue Mountains World Heritage Area.

Extensive urban tree canopy will mitigate the heat island effect and provide cooler, more beautiful places. The substantial land release areas to house the District's new residents will become neighbourhoods with a range of housing types, access to public transport and infrastructure including schools, hospitals and community facilities.

The District will retain its unique rural areas and the economic benefits of rural land so close to a metropolis, and protect its natural areas, heritage and tourism assets and the unique character of its smaller centres and villages.

Fairfield City Council



| | | | |
|-------------------------------|------------------------------------|--|---|
| Local Government Boundary | Trade Gateway | Urban Area | Train Link / Mass Transit Investigation 10-20 years |
| District Boundary | Western Sydney Employment Area | Protected Natural Area | Freight Rail Investigation |
| Metropolitan City Cluster | Industrial Land | Metropolitan Rural Area | On Street Rapid Transit |
| Health and Education Precinct | Land Release Area | Major Urban Parkland and Reserve | Rapid Bus |
| Strategic Centre | Urban Renewal Area | Visionary Parkland and Reserve | Motorway |
| Local Centre | Priority Growth Area Investigation | Train Station | Road Investigation 0-10 years |
| Economic Corridor | Urban Investigation Area | Train Link / Mass Transit Investigation 0-10 years | Road Investigation 10-20 years |

NOTE: Committed projects of: Western Harbour Tunnel & Beaches Link, F6 – WestConnex to President Avenue Kogarah, Parramatta Light Rail Stage 2 and Sydney Metro West are subject to final business case, no investment decision yet. Routes and stops for some transport corridors/projects are indicative only.

Housing Fairfield City Council


 **Housing supply target (2016-2021): 3,050**

|  Actions | Responsibility |
|---|---|
| <p>15. Prepare local or district housing strategies that address the following:</p> <ul style="list-style-type: none"> a. the delivery of five-year housing supply targets for each local government area b. the delivery of 6-10 year (when agreed) housing supply targets for each local government area c. capacity to contribute to the longer term 20-year strategic housing target for the District d. housing strategy requirements outlined in Objective 10 of the draft <i>Greater Sydney Region Plan</i> that include: <ul style="list-style-type: none"> i. creating capacity for more housing in the right locations ii. supporting planning and delivery of priority growth areas and precincts as relevant to each local government area iii. supporting investigation of opportunities for alignment with investment in regional and district infrastructure iv. supporting the role of centres. | Fairfield City Council |
| <p>16. Prepare Affordable Rental Housing Target schemes.</p> | Councils and other planning authorities |

Fairfield Strategic Centre

 Job targets

| | | |
|-----------------------|------------------------------|----------------------------|
| 2016 estimate: | 2036 baseline target: | 2036 higher target: |
| 5,400 | 6,000 | 10,000 |

|  Actions | Responsibility |
|---|--|
| <p>57. Strengthen Fairfield through approaches that:</p> <ul style="list-style-type: none"> a. investigate opportunities for feasible redevelopment and increased density close to the Fairfield Transport Interchange b. enhance the public realm and encourage new connected civic plazas and public open spaces including better walking and cycling links to nearby Fairfield Park and Prospect Creek corridor c. build upon the emerging concentration of multicultural support services and maintain the current business and legal sector d. increase the liveability of the centre by activating the public realm, including developing the vision for an 'eat street' and growing the night-time economy e. facilitate the attraction of office/commercial floor space and allow for innovation including smart work hubs f. improve east-west connectivity within Fairfield City Centre from surrounding suburbs prioritising pedestrian, cycle and public transport facilities. | Fairfield City Council, other planning authorities and State infrastructure agencies |

The draft *Western City District Plan* implements the objectives, strategies and actions of the draft *Greater Sydney Region Plan*, by outlining how they will be applied through a set of planning priorities and actions for the District.

Planning Priorities for the Western City District

- **Planning Priority W1:** Planning for a city supported by infrastructure
- **Planning Priority W2:** Working through collaboration
- **Planning Priority W3:** Providing services and social infrastructure to meet people's changing needs
- **Planning Priority W4:** Fostering healthy, creative, culturally rich and socially connected communities
- **Planning Priority W5:** Providing housing supply, choice and affordability, with access to jobs and services
- **Planning Priority W6:** Creating and renewing great places and local centres, and respecting the District's heritage
- **Planning Priority W7:** Establishing the land use and transport structure to deliver a liveable, productive and sustainable Western Parkland City
- **Planning Priority W8:** Leveraging industry opportunities from the Western Sydney Airport and Badgerys Creek Aerotropolis
- **Planning Priority W9:** Growing and strengthening the metropolitan city cluster
- **Planning Priority W10:** Maximising freight and logistics opportunities and planning and managing industrial and urban services land
- **Planning Priority W11:** Growing investment, business opportunities and jobs in strategic centres
- **Planning Priority W12:** Protecting and improving the health and enjoyment of the District's waterways
- **Planning Priority W13:** Creating a Parkland City urban structure and identity, with South Creek as a defining spatial element
- **Planning Priority W14:** Protecting and enhancing bushland and biodiversity
- **Planning Priority W15:** Increasing the urban tree canopy cover and delivering Green Grid connections
- **Planning Priority W16:** Protecting and enhancing scenic and cultural landscapes
- **Planning Priority W17:** Better managing rural areas
- **Planning Priority W18:** Delivering high quality open space
- **Planning Priority W19:** Reducing carbon emissions and managing energy, water and waste efficiently
- **Planning Priority W20:** Adapting to the impacts of urban and natural hazards and climate change

How to be involved

The draft *Western City District Plan* is on formal public exhibition until 15 December 2017. You can read the entire updated draft District Plan at: www.greater.sydney

Find out more about making a submission by visiting: www.greater.sydney/submissions

Before making a submission, please read the privacy statement at: www.greater.sydney/privacy