

OUR GREATER SYDNEY 2056

City of Ryde Council

Council snapshot of the draft *North District Plan*

The vision for Greater Sydney as a metropolis of three cities – the Western Parkland City, the Central River City and the Eastern Harbour City – means residents in the North District will have quicker and easier access to a wider range of jobs, housing types and activities.

The North District is part of the Eastern Harbour City. Its expansive national parks, waterways and beaches provide a natural setting for its vibrant, productive centres and strong community connections.

The District comprises geographically diverse, economically strong and environmentally aware communities who value and embrace progress, the local landscape and a great quality of life.

The draft *North District Plan* guides the growth of the District within the context of the metropolis of three cities to improve the District's social,

economic and environmental assets. The draft Plan guides this growth by protecting the District's many lifestyle assets – from the bush, to its world-class beaches and Sydney Harbour, its vibrant local centres and heritage.

The District will attract even more local, domestic and international visitors as this thriving modern economy grows and coexists within beautiful, natural landscapes.

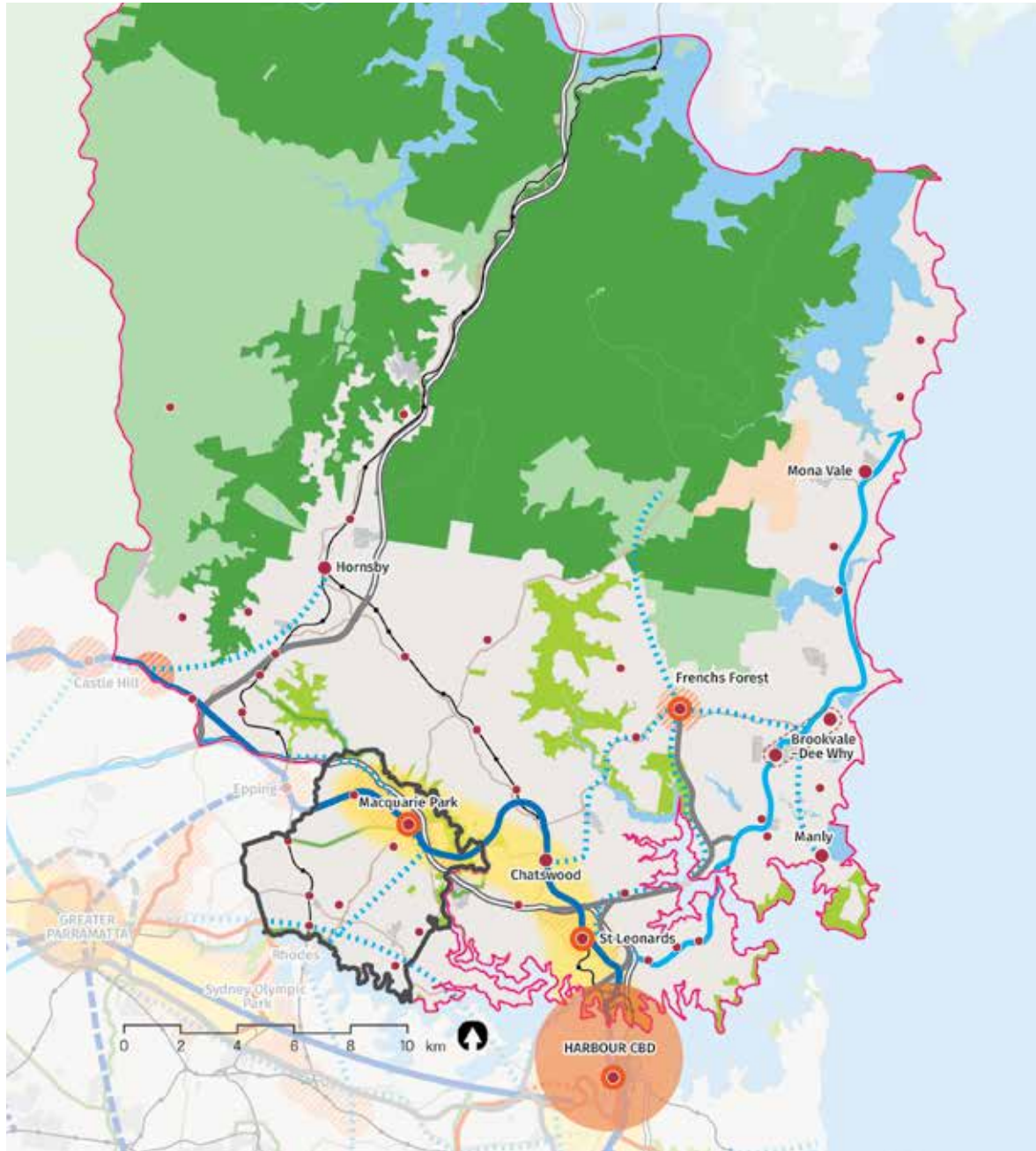
Housing and jobs will be targeted in the right places, aligned to new and enhanced infrastructure. Sydney Metro will create fast and efficient rail connections to both the Harbour CBD in the south and the growing communities in the northwest, while re-energising centres along its corridor.

Economic growth and a greater diversity of jobs will be targeted in the strategic centres of St Leonards, Chatswood, Macquarie Park, Brookvale-Dee Why, Hornsby and in Manly and Mona Vale as required. The Northern Beaches Hospital at Frenchs Forest will significantly boost the District's businesses and jobs in the health sector.

North Sydney's commercial core will be enhanced to strengthen the District's economic links to the Harbour CBD and its role in the Eastern Economic Corridor. North Sydney's neighbourhoods and lifestyle assets will continue to provide housing close to jobs, services and infrastructure, and give the area a unique character.

The North District will have new networks for walking and cycling both within and between strategic centres, along main roads, and along the coast from Manly through to Palm Beach. It will also have networks of open space and urban tree canopy as the Greater Sydney Green Grid is developed.

City of Ryde Council



Local Government Boundary	Industrial Land	Major Urban Parkland and Reserve	Rapid Bus
District Boundary	Land Release Area	Waterways	Motorway
Metropolitan City Centre	Transit Oriented Development	Train Station	Committed Motorway
Health and Education Precinct	Urban Renewal Area	Committed Train Link	Green Grid Priority Project
Strategic Centre	Urban Area	Freight Rail Investigation	
Local Centre	Protected Natural Area	Light Rail	
Economic Corridor	Metropolitan Rural Area	On Street Rapid Transit	

NOTE: Committed projects of: Western Harbour Tunnel & Beaches Link, F6 – WestConnex to President Avenue Kogarah, Parramatta Light Rail Stage 2 and Sydney Metro West are subject to final business case, no investment decision yet. Routes and stops for some transport corridors/projects are indicative only.

Housing City of Ryde Council

 **Housing supply target (2016-2021): 7,600**

 Actions	Responsibility
<p>15. Prepare local or district housing strategies that address the following:</p> <ul style="list-style-type: none"> a. the delivery of five-year housing supply targets for each local government area b. the delivery of 6-10 year (when agreed) housing supply targets for each local government area c. capacity to contribute to the longer term 20-year strategic housing target for the District d. housing strategy requirements outlined in Objective 10 of the draft <i>Greater Sydney Region Plan</i> that include: <ul style="list-style-type: none"> i. creating capacity for more housing in the right locations ii. supporting planning and delivery of priority growth areas and precincts as relevant to each local government area iii. supporting investigation of opportunities for alignment with investment in regional and district infrastructure iv. supporting the role of centres. 	City of Ryde Council
<p>16. Prepare Affordable Rental Housing Target schemes.</p>	Councils and other planning authorities

Macquarie Park Strategic Centre

 **Job targets**

2016 estimate: 58,500	2036 baseline target: 73,000	2036 higher target: 79,000
--	---	---

 Actions	Responsibility
<p>29. Strengthen Macquarie Park through approaches that:</p> <ul style="list-style-type: none"> a. enable additional capacity for commercial floor space and maintain a commercial core b. improve urban amenity as the centre transitions from business park to a vibrant commercial centre, including reducing the impact of vehicle movements on pedestrian and cyclist accessibility c. deliver a finer grain road network to enhance pedestrian connections and provide new access points d. promote design excellence in urban design by upgrading public areas e. deliver an innovation ecosystem in Macquarie Park, capitalising on the relationship with Macquarie University and nearby high-tech and medical corporations f. improve public transport connections to Parramatta and the District's other strategic centres, including the Northern Beaches Hospital. 	NSW Department of Planning and Environment, State agencies, Greater Sydney Commission, NSW Health and City of Ryde Council

The draft *North District Plan* implements the objectives, strategies and actions of the draft *Greater Sydney Region Plan*, by outlining how they will be applied through a set of planning priorities and actions for the District.

Planning Priorities for the North District

- **Planning Priority N1:** Planning for a city supported by infrastructure
- **Planning Priority N2:** Working through collaboration
- **Planning Priority N3:** Providing services and social infrastructure to meet people's changing needs.
- **Planning Priority N4:** Fostering healthy, creative, culturally rich and socially connected communities
- **Planning Priority N5:** Providing housing supply, choice and affordability, with access to jobs and services
- **Planning Priority N6:** Creating and renewing great places and local centres, and respecting the District's heritage
- **Planning Priority N7:** Growing a stronger and more competitive Harbour CBD
- **Planning Priority N8:** Eastern Economic Corridor is better connected and more competitive
- **Planning Priority N9:** Growing and investing in health and education precincts
- **Planning Priority N10:** Growing investment, business and jobs opportunities in strategic centres
- **Planning Priority N11:** Protecting and managing industrial and urban services land
- **Planning Priority N12:** Delivering integrated land use and transport planning and a 30-minute city
- **Planning Priority N13:** Supporting growth of targeted industry sectors
- **Planning Priority N14:** Leveraging inter-regional transport connections
- **Planning Priority N15:** Protecting and improving the health and enjoyment of Sydney Harbour and the District's waterways
- **Planning Priority N16:** Protecting and enhancing bushland and biodiversity
- **Planning Priority N17:** Protecting and enhancing scenic and cultural landscapes
- **Planning Priority N18:** Better managing rural areas
- **Planning Priority N19:** Increasing urban tree canopy cover and delivering Green Grid connections
- **Planning Priority N20:** Delivering high quality open space
- **Planning Priority N21:** Reducing carbon emissions and managing energy, water and waste efficiently
- **Planning Priority N22:** Adapting to the impacts of urban and natural hazards and climate change

How to be involved

The updated draft *North District Plan* is on formal public exhibition until 15 December 2017. You can read the entire updated draft District Plan at: www.greater.sydney

Find out more about making a submission by visiting: www.greater.sydney/submissions

Before making a submission, please read the privacy statement at: www.greater.sydney/privacy