

© Eco Logical Australia Pty. Ltd. This map is not guaranteed to be free from error or omission. Eco Logical Australia Pty. Ltd. and its employees disclaim liability for any act done on the information in the map and any consequences of such acts or omissions.

Figure 33: Management viability of Cumberland Plain Shale Woodlands and Shale Gravel Transition Forest within the North West Growth Centre

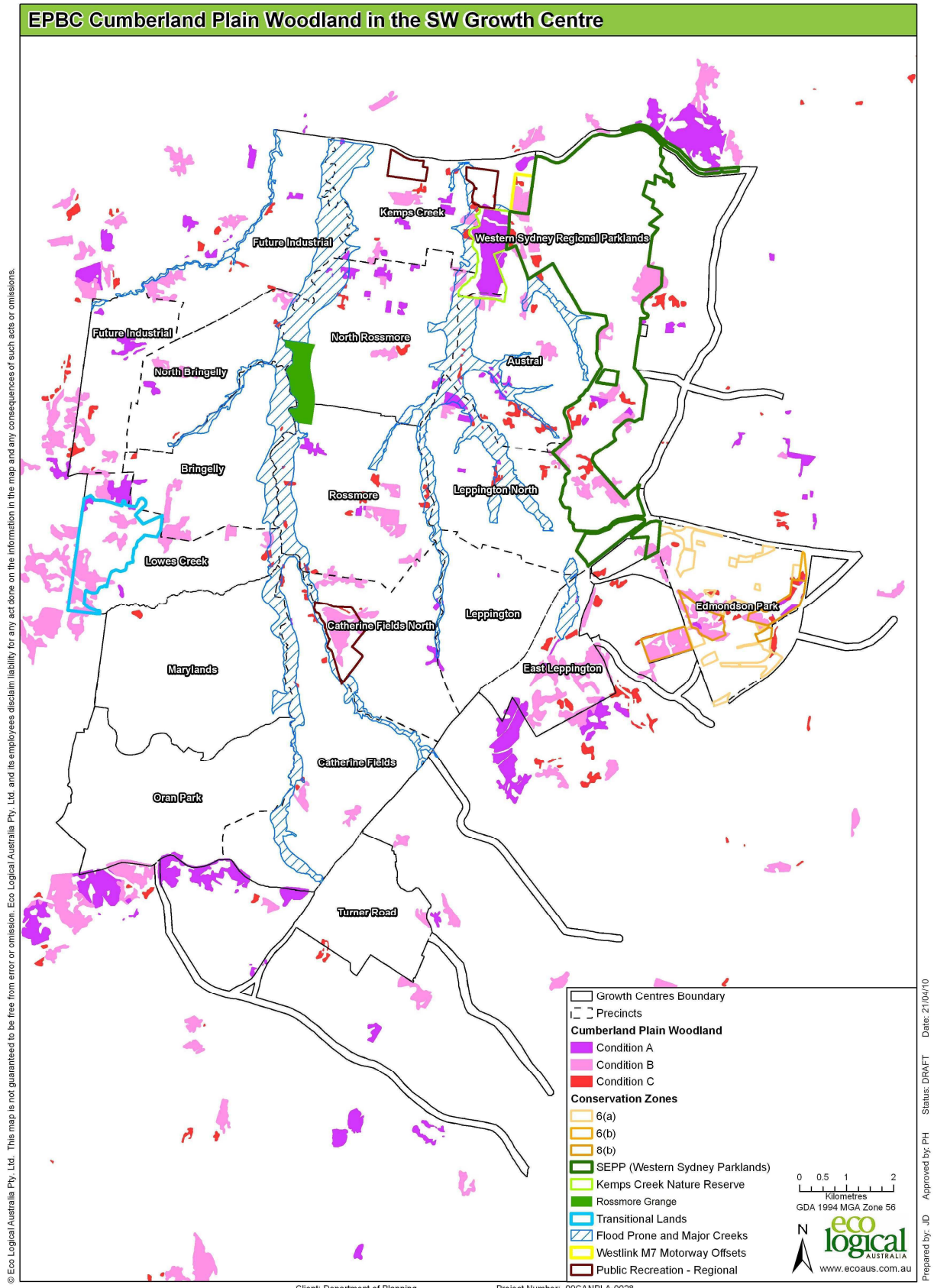


Figure 34: Management viability of Cumberland Plain Shale Woodlands and Shale Gravel Transition Forest within the South West Growth Centre

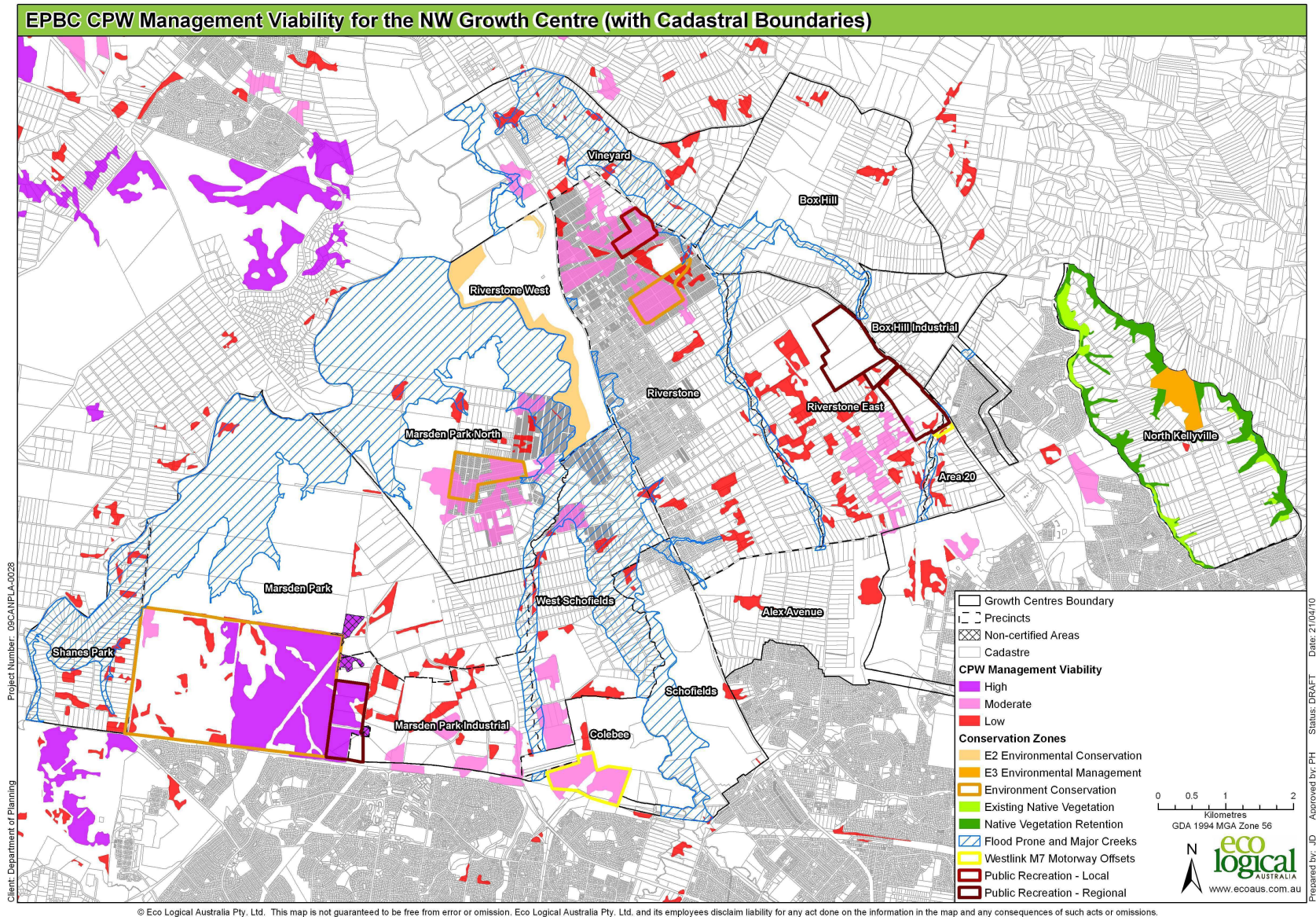
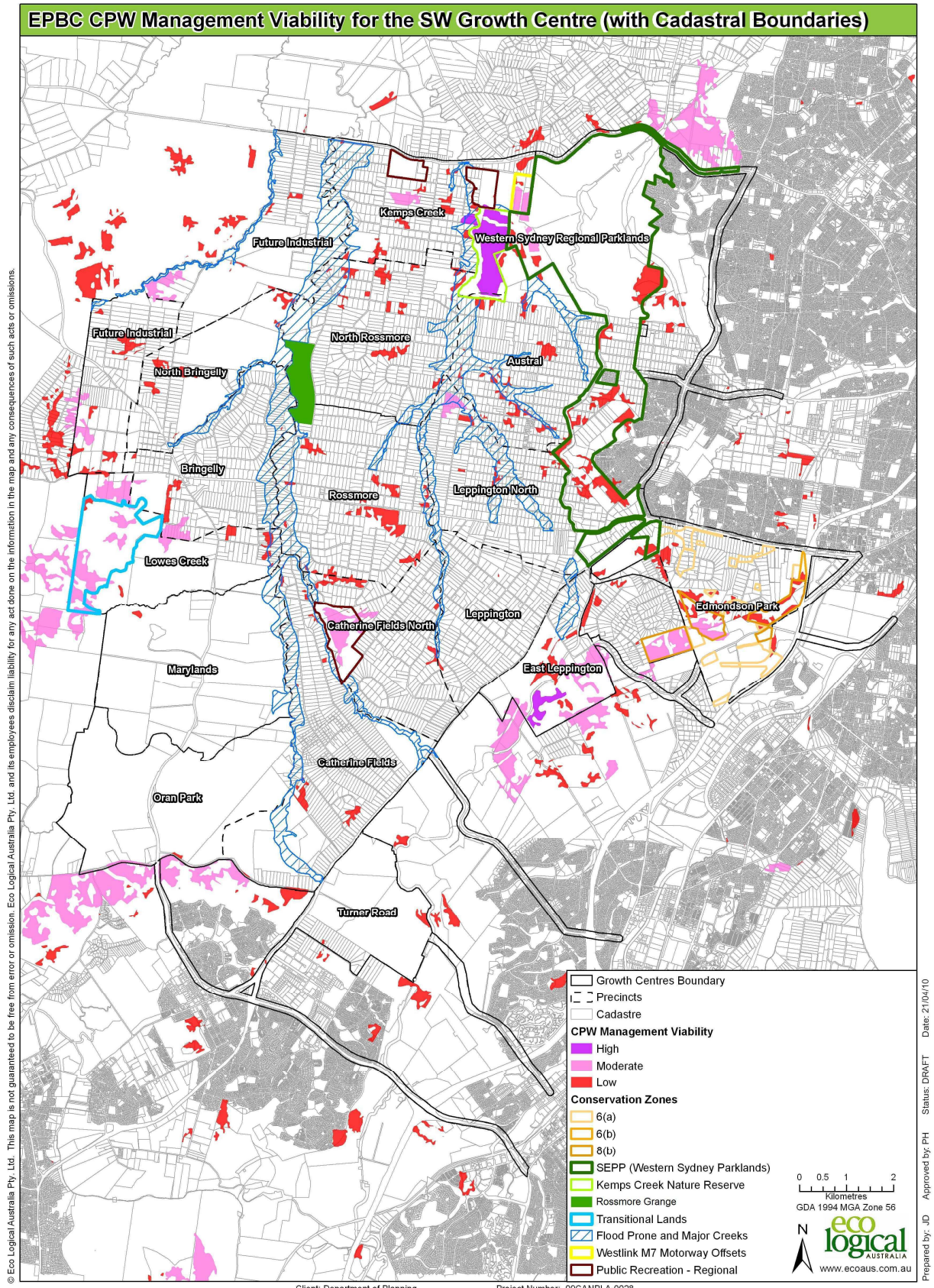


Figure 35: Cadastral boundaries and distribution of Cumberland Plain Shale Woodlands and Shale Gravel Transition Forest within the North West Growth Centre



© Eco Logical Australia Pty. Ltd. This map is not guaranteed to be free from error or omission. Eco Logical Australia Pty. Ltd. and its employees disclaim liability for any act done on the information in the map and any consequences of such acts or omissions.

Client: Department of Planning

Project Number: 09CANPLA-0028

Date: 21/04/10
Status: DRAFT
Approved by: PH
Prepared by: JD

Figure 36: Cadastral boundaries and distribution of Cumberland Plain Shale Woodlands and Shale Gravel Transition Forest within the South West Growth Centre