


**Environmental Planning and Assessment Amendment
(Western Sydney Growth Areas – Special Contributions Area)
Order 2011**

Environmental Planning and Assessment Act 1979
Western Sydney Growth Areas – Special Contributions Area Map - sheet LAP_001


Legend

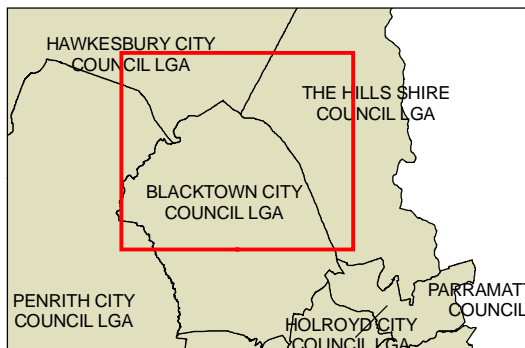
 Special Contributions Area

Precincts

- 1 North West Growth Centre
- 2 South West Growth Centre
- 3 Balmoral Road
- 4 Elderslie
- 5 Spring Farm

Cadastre

 Cadastre 13/12/2010 © NSW LPMA

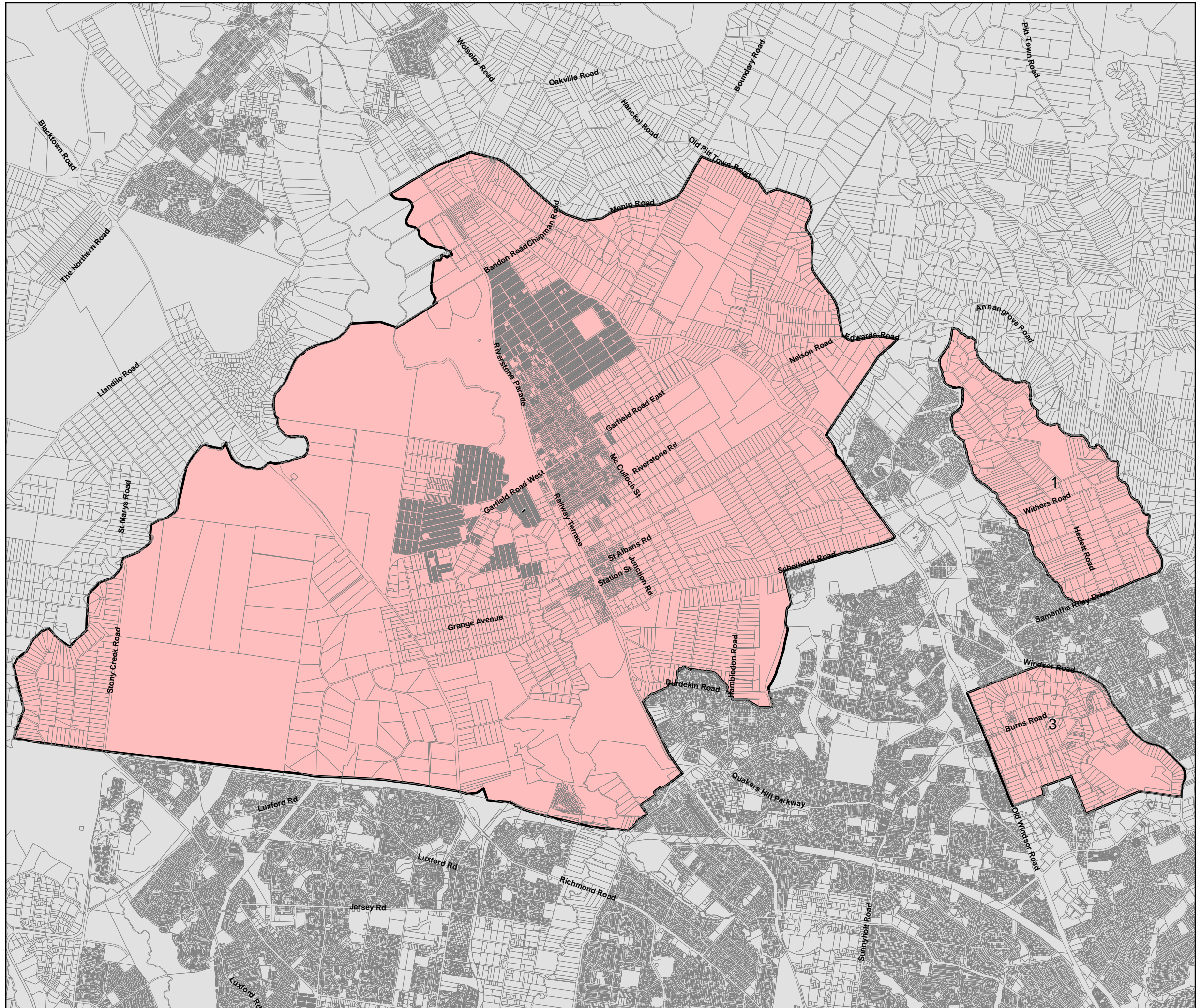


0 0.5 1 1.5 Kilometres

Scale: 1:60,000 @ A3

Projection: MGA Zone 56
Datum: GDA94


Map Identification Number
EPA_ACT_ORD_SCA_WSGA_LAP_001_20101216



Environmental Planning and Assessment Amendment (Western Sydney Growth Areas – Special Contributions Area) Order 2011

Environmental Planning and Assessment Act 1979
Western Sydney Growth Areas – Special Contributions Area Map – sheet LAP_002


Legend

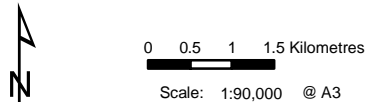
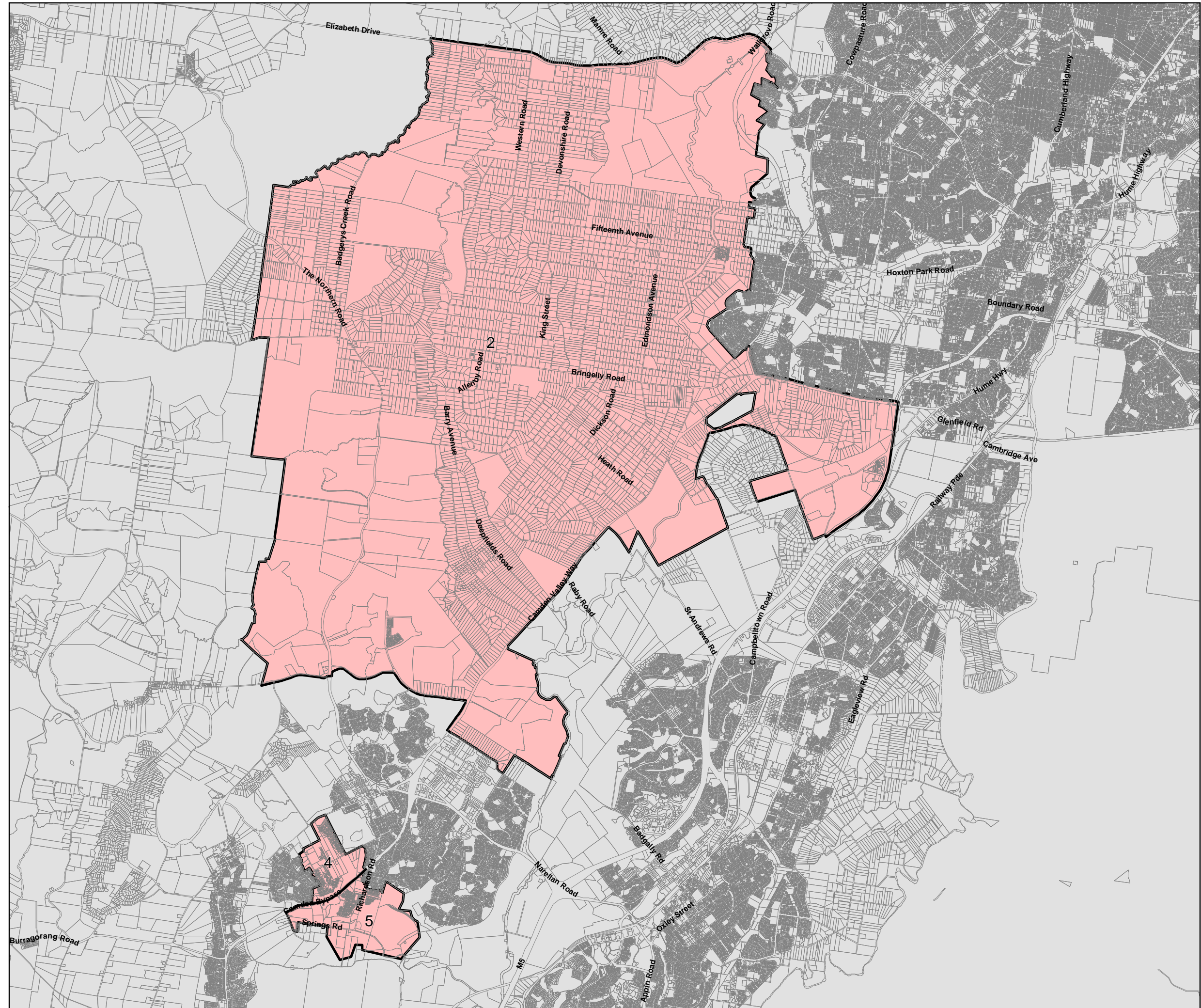
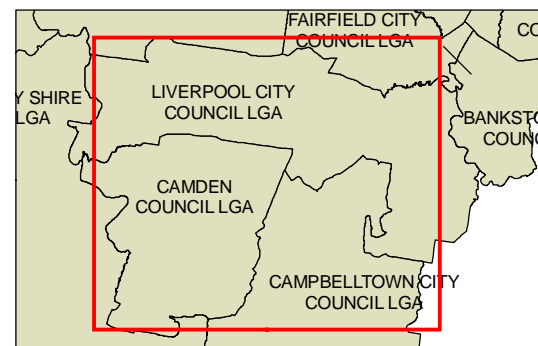
 Special Contributions Area

Precincts

- 1 North West Growth Centre
- 2 South West Growth Centre
- 3 Balmoral Road
- 4 Elderslie
- 5 Spring Farm

Cadastre

 Cadastre 13/12/2010 © NSW LPMA



Projection: MGA Zone 56
Datum: GDA94